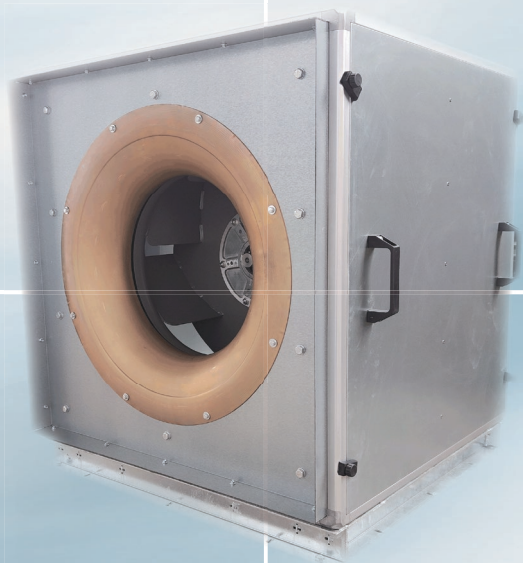


# In-Line Centrifugal Fans

- *WMF Explosion Proof Series*



TI23ATEX 353

**Air in Motion.**  
Wolter Fans.

**K01.WMF.EX**

**wolter** 

# Table of Content

---



Contents	Page 1
Design Features	Page 2 ~ 3
Fan Performance Curves	Page 4 ~ 12
Dimensions	Page 17

---

Subject to change without prior notice.

# ATEX Explosion Proof - In-Line Centrifugal Fan General Information



## Fan type code

<b>WMF 500 - 4 Ex</b>	
Ex	Explosion Proof ATEX
4	Number of poles of motor: 2, 4, 6, 8
500	The size of the impeller 250 to 630
WMF	Model name



Cert.No.: TI23ATEX 353

## Design Features

### Performance

The in-line centrifugal flow fan has all the advantage of axial flow and centrifugal fans. i.e. straight airflow, light weight, compact and space saving design, easy installation, high-pressure stability, low noise level and low running costs. The fans are specially designed with build-in inlet cone to achieve high static efficiency and high volume flow. Standard size from 250 to 630 are available. The performance range is from 200 up to 24,000 m<sup>3</sup>/hrs on air volume, at static pressure up to 2,600Pa. The performance curves have been established in according to AMCA 210 / ISO 5801.

Explosion proof fans with size from 250 to 630 are available upon requested.

- › Certified according to ATEX guideline 94/9/EC as well as EN 60079-0, EN 1127-1, EN ISO 80079-36, EN ISO 80079-37 and EN 14986
- › Applicable in categorie 2, zone 1 and 2
- › Ex e increased safety respectively and Ex d = flameproof enclosure
- › The fans are applicable for group IIA, IIB and IIC and also additional usable for hydrogen.
- › Motor protection by cold conductor. Only certified when connected with a motor protection device

### Fan Housing

Wolter's WMF 250 to 630 rigidly constructed fans box housing made from extruded aluminium profiles and can be of flame retardant plastic or aluminium corners. Side plates and mounting feet for bolting onto supports are fabricated from heavy gauge pre-galvanised sheet, can be of aluminium or stainless steel sheet as well.

Fans inlet and outlet can be fitted with DW142 flanges suitable for direct connection to flexible connector are designed for easy removal and installation. The fans housing are design for easy access to the impeller and drive with access panel to facilitated easy maintenance. All steel components are supplied with zinc plated and finish as standard. For special applications, motors can be installed externally on fan housing. Explosion proof fans inlet cone come with sheet metal type with non-sparking material protection (such as brass, copper and etc) as per the requirements and application.

### Acoustic Housing - Optional 50mm Acoustic Panel

Frame housing are made from extruded aluminium profiles and corners. The external side plates are made from pre-galvanized sheet metal with internal perforated galvanized sheet as standard. Aluminium or stainless steel are available upon requested. Epoxy coat as optional. Access panel are provided on each enclosure so that all removable parts can be assessed for maintenance purpose.

Cabinet housing insulated to ensure low noise levels are internally acoustic lining with 32 kg/m<sup>3</sup> fiberglass of insert, non-hygroscopic, vermin and moisture proof as well as asbestos and CFC free and not support growth of bacteria. Servicing side door on request. For weatherproof version, weather-hood can be added as requested.

### Sound levels

In order to make possible an assessment of sound projection adequate to human ear the A-assessed description of sound levels has been chosen. The ascertaining of the sound level follows the reverberant room method in accordance to AMCA 300 / ISO 13347-2. The A-weighted sound power levels is shown on the performance curves.

The sound power level at the different octave band mid-frequencies relevant for the interpretation of sound absorbers can be calculated by means of an equation.

### Centrifugal Plug Fan Impeller

Wolter backward curve impellers are manufactured from powder coated sheet steel as standard. Aluminium or stainless steel sheet are available upon requested, finished in epoxy paint as optional.

The special design blade configuration guarantees high volume flow and static efficiency with low noise operation. Impellers are statically and dynamically balanced in accordance to quality level ISO 21940-11 / AMCA 204.

# ATEX Explosion Proof - In-Line Centrifugal Fan

## General Information



### Motor

Wolter uses fully enclosed high-efficiency flameproof asynchronous motors, which complies with the national standards IEC 60079-0 (GB/T 3836.1) "Explosive Atmospheres Part 1: General Requirements" and IEC 60079-1 (GB/T 3836.2) "Explosive Atmospheres Part 2: Equipment Protected by Flameproof Enclosures 'd'". Meanwhile the power levels and installation dimensions comply with the provisions of IEC 60072-1 (GB/T 4772.1) and IEC 60072-2 (GB/T 4772.2) standards. The standard motors have Class F (H for optional) and enclosure IP55. Continuous operating ranges from -15°C to +40°C, other operating condition on demand.

For explosion proof application, motor shaft are fitted with non-sparking sleeve to prevent impeller movement.

For explosion proof fans, the following table shows possible temperature classifications:

Protection type	Description	Temperature classification	Ignition temp.of different gas mixtures	Max. surface temp. of electrical equipment	Group	Gases and vapours of substances
i	intrinsic safety	T1	> 450 °C	450 °C	IIA	acetone, ammonia, ethyl alcohol, fuel, benzene, methane, propane, carbon dioxide
c	constructional safety	T2	> 300 - > 450 °C	300 °C		
d	flameproof enclosure	T3	> 200 - > 300 °C	200 °C	II B	ethylene, town gas, diethylether
e	increased safety	T4	> 135 - > 200 °C	135 °C	IIC	hydrogen, carbon, disulphide, acetylene
p	pressurisation	T5	> 100 - > 135 °C	100 °C		
o	oil immersion	T6	> 85 - > 100 °C	85 °C		

- › Wolter Test certification with T6 is valid for T5, T4, T3, T2 and T1 but not vice versa.
- › For normal application or without specific instructions, motor will be delivered with T3/T4 motor as standard
- › Motor certification on protection type with Ex "d" can be valid for Ex "e" but not vice versa. Wolter supplied motor on Ex"d" will come with certification, Ex"e" certification may not be necessary.

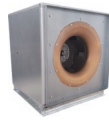
### For explosion proof application

The electrical connections of the fan shall be carried out according to the instructions of the motor manufacturer. Wiring connection must come with certified cable glands entries and closing unused holes of the terminal box shall be certified according to the standards: EN 60079-0, EN 60079-1 and EN 60079-31. Extra mounted terminal box and other accessories are upon request.

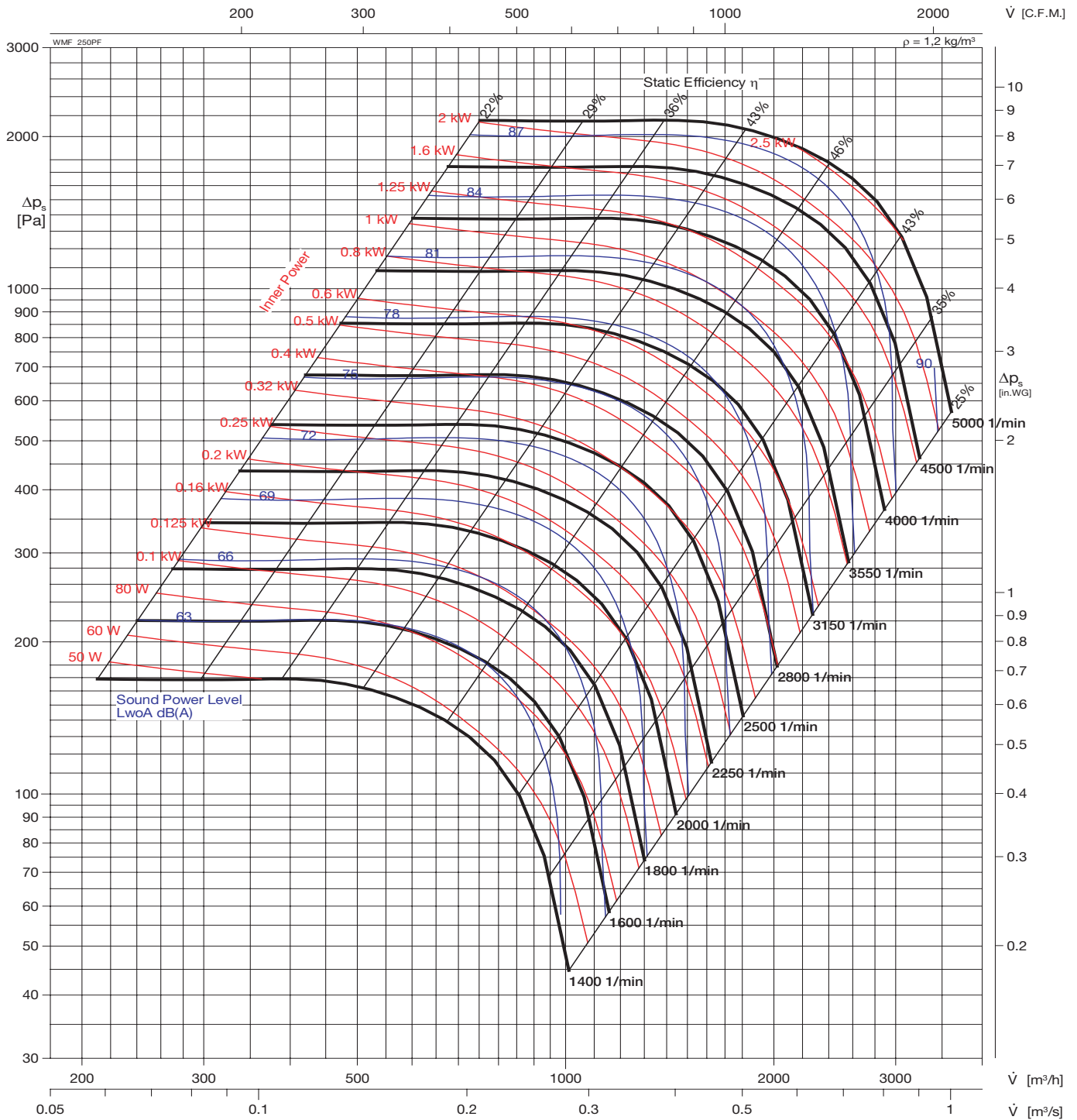
### Accessories (optional)

The following accessories are available:

- › Flexible connection:  
The flexible connection consists of two galvanized flange, assembled with a gas-tight canvas. Please note that the dimensions of suction side and outlet side can be different and the correct one has to be chosen
- › Inlet and outlet flange:  
Equivalent to flexible connection fitting flanges of specification in accordance to DW142 for inlet and outlet side can be ordered. They are pre-galvanized on both sides
- › Dampers:  
The self-working dampers with blades made of weatherproof plastic and aluminium frames has to be mounted at the suction side. Motor driven volume control dampers made of strong extruded aluminium profile or stainless steel are also available with any dimension in width.
- › Motor with 100% speed controllable
- › Motor with protection through thermal contact
- › Protective guard
- › Anti-vibration mounting isolators



### WMF 250 Ex



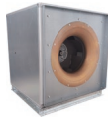
#### Relative frequency spectrum in $\Delta\text{dB/Okt}$

N [1/min]	Octave b. midfreq. [Hz]								
	RPM	63	125	250	500	1K	2K	4K	8K
2 Pole	-7.5	-7.5	-8.6	-9.0	-7.1	-10.8	-11.1	-16.5	
4 Pole	-6.7	-7.8	-8.2	-6.4	-10.0	-10.3	-15.7	-17.8	

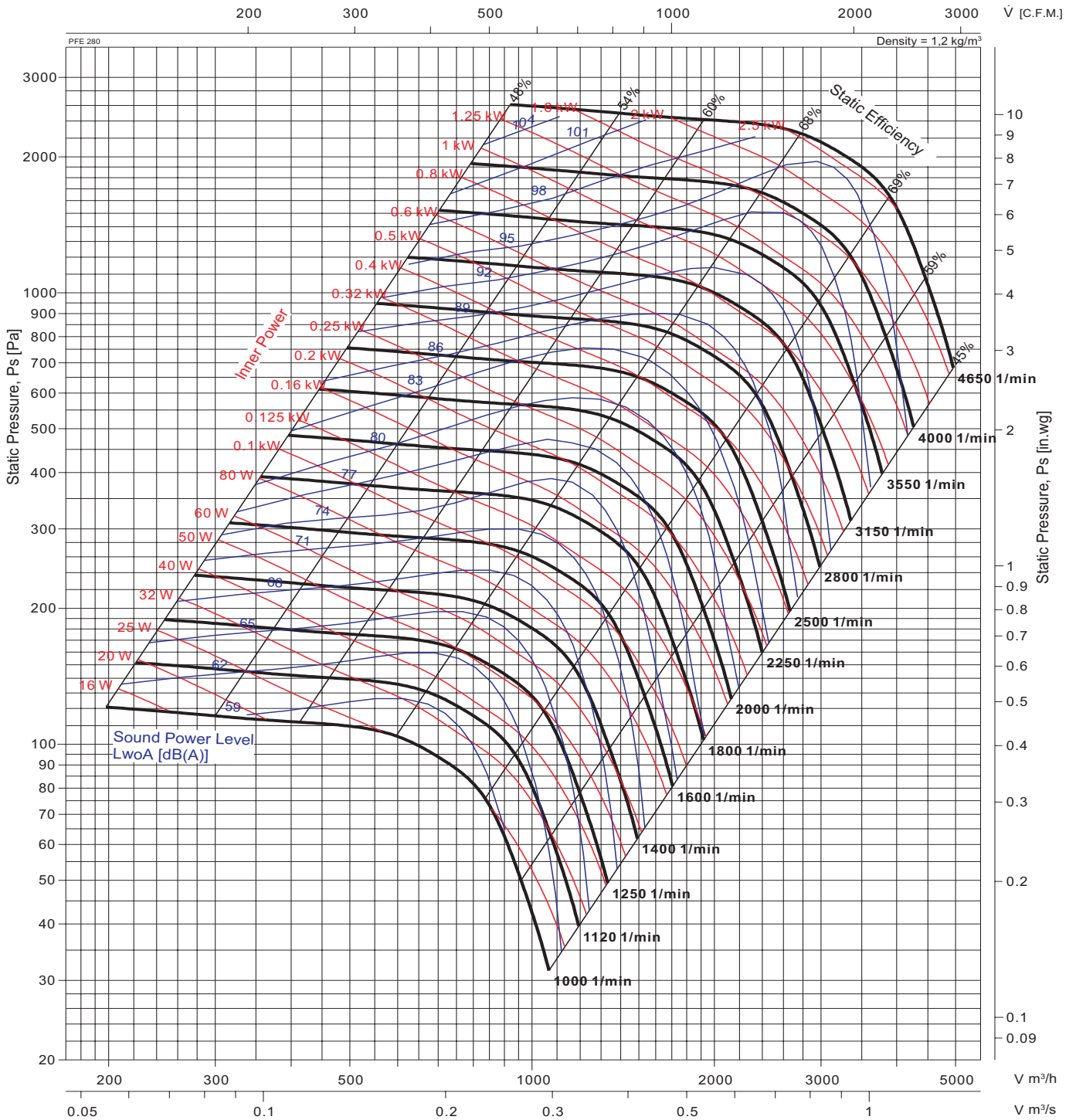


Cert.No.: T123ATEX 353

Air and sound Performance testing was according to AMCA 210 and AMCA 300 with one side open in an accredited laboratory by AMCA; The A-weighted sound ratings shown have been calculated per AMCA International Standard 301nances.



## WMF 280 Ex



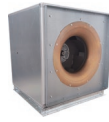
### Relative frequency spectrum in ΔdB/Okt

N [1/min]	Octave b. midfreq. [Hz]							
RPM	63	125	250	500	1K	2K	4K	8K
2 Pole	-7.2	-7.2	-8.5	-8.9	-7.3	-11.2	-11.7	-17.1
4 Pole	-6.4	-7.7	-8.0	-6.4	-10.4	-10.8	-16.2	-18.4

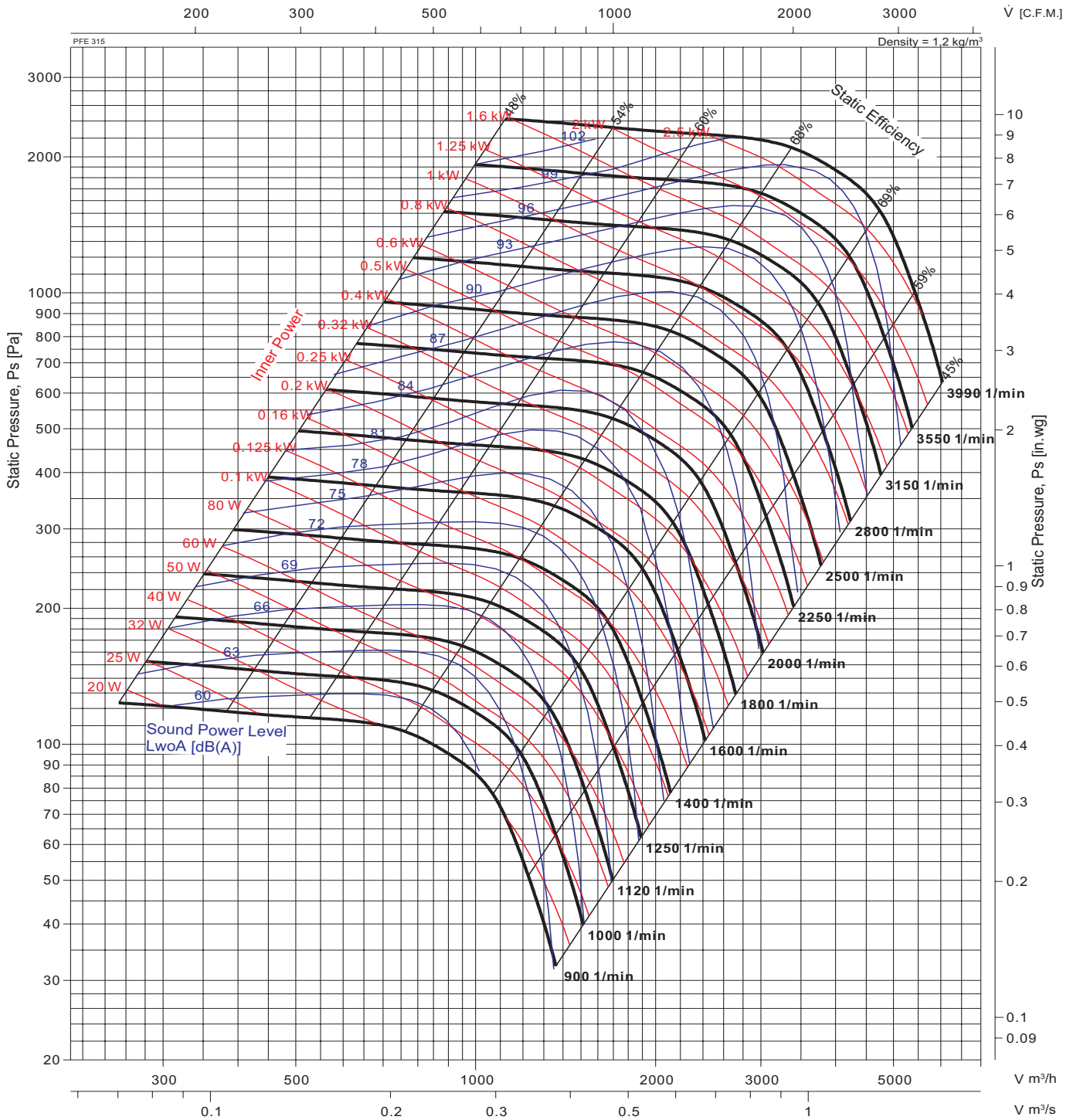


Cert.No.:  
T123ATEX 353

Air and sound Performance testing was according to AMCA 210 and AMCA 300 with one side open in an accredited laboratory by AMCA; The A-weighted sound ratings shown have been calculated per AMCA International Standard 301nances.



### WMF 315 Ex



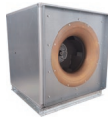
#### Relative frequency spectrum in $\Delta$ dB/Okt

N [1/min]	Octave b. midfreq. [Hz]								
	RPM	63	125	250	500	1K	2K	4K	8K
2 Pole	-7.0	-7.0	-8.5	-8.8	-7.5	-11.7	-12.2	-17.7	
4 Pole	-6.0	-7.5	-7.9	-6.6	-10.7	-11.3	-16.8	-18.9	

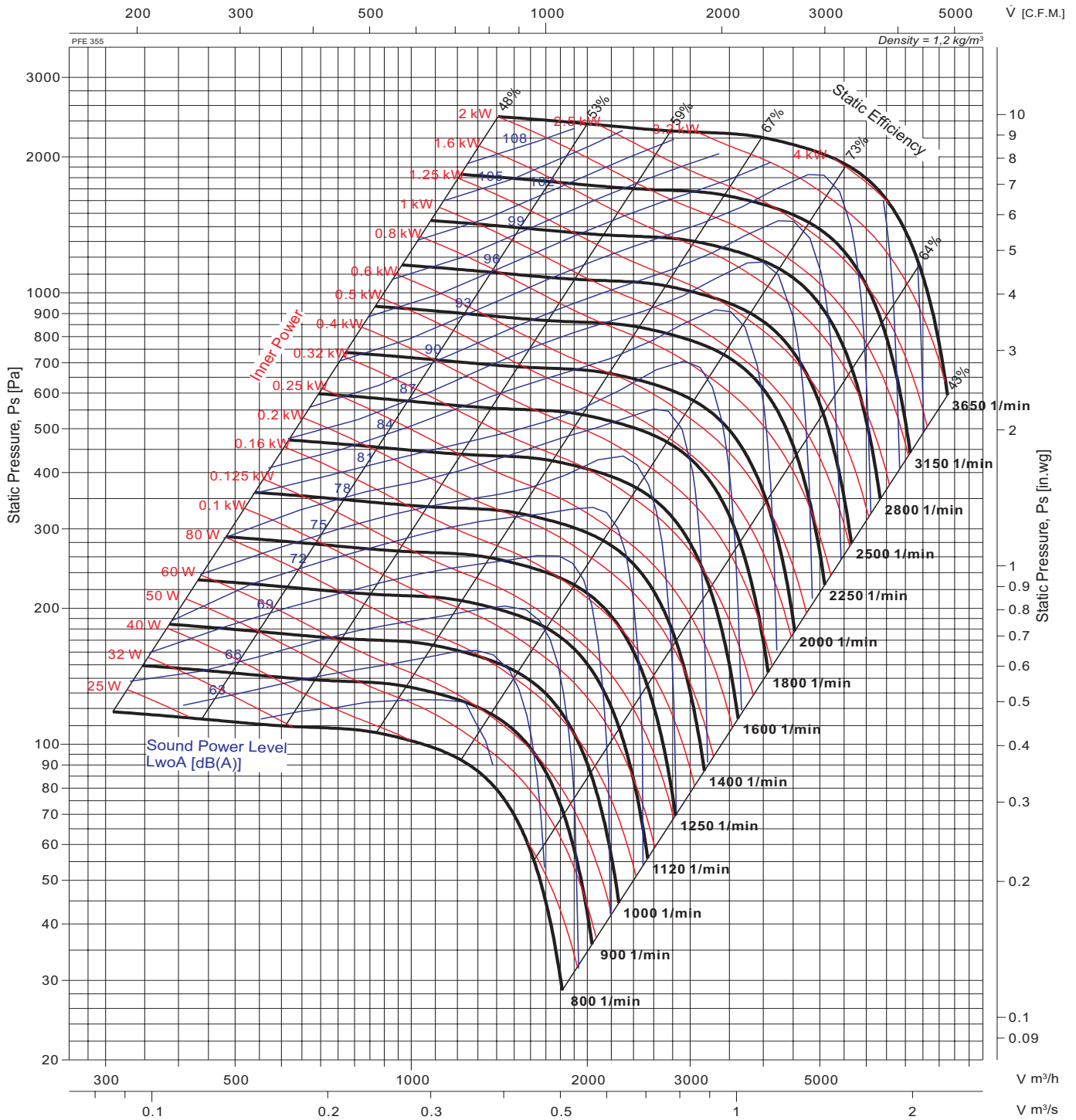


Cert.No.:  
T123ATEX 353

Air and sound Performance testing was according to AMCA 210 and AMCA 300 with one side open in an accredited laboratory by AMCA; The A-weighted sound ratings shown have been calculated per AMCA International Standard 301nances.



## WMF 355 Ex



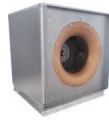
### Relative frequency spectrum in ΔdB/Okt

N [1/min]	Octave b. midfreq. [Hz]								
	RPM	63	125	250	500	1K	2K	4K	8K
2 Pole	-6.7	-6.7	-8.5	-8.7	-7.8	-12.2	-13.1	-17.8	
4 Pole	-5.6	-7.4	-7.7	-6.7	-11.1	-12.0	-16.7	-20.0	

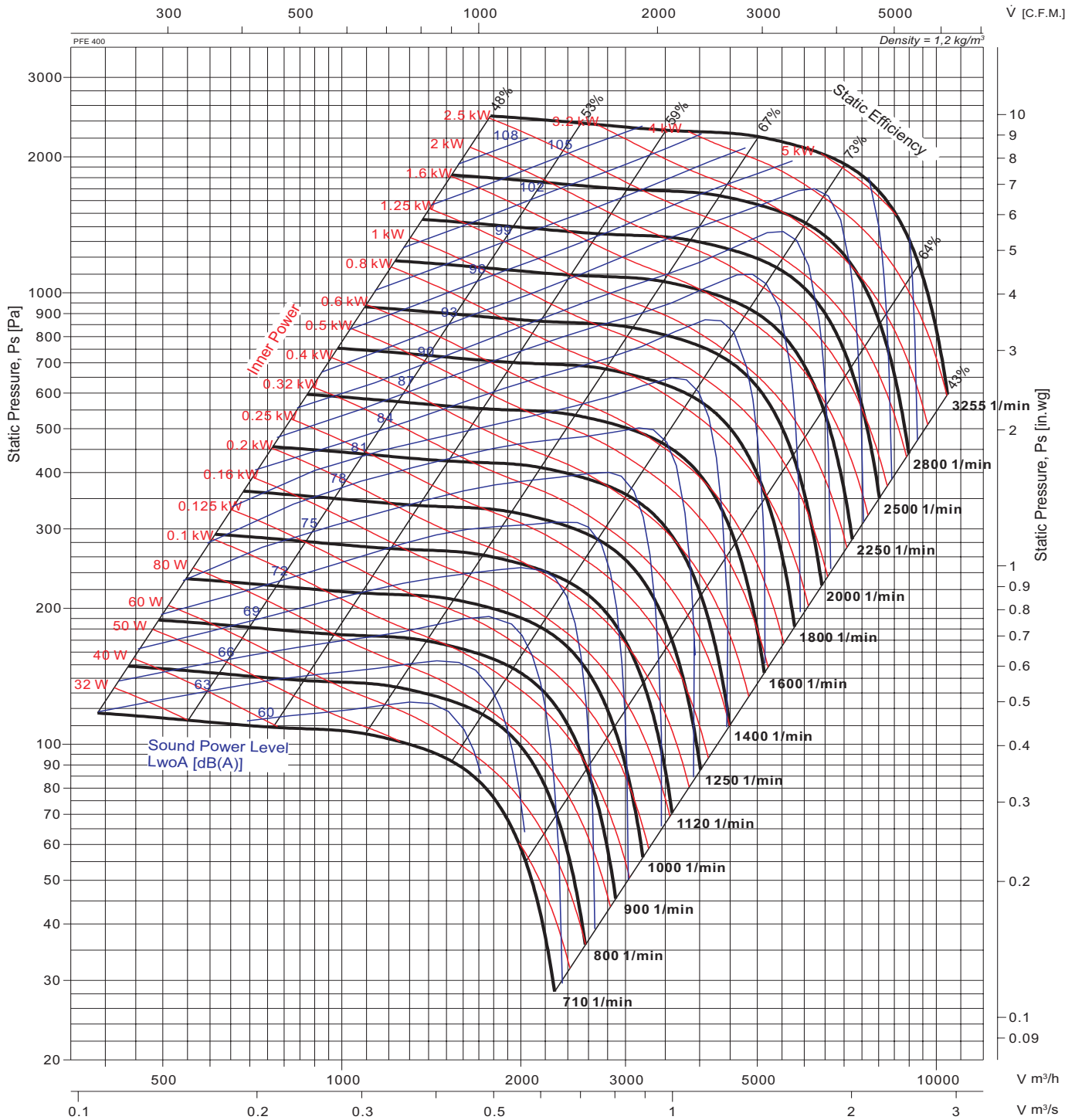


Cert.No.:  
T123ATEX 353

Air and sound Performance testing was according to AMCA 210 and AMCA 300 with one side open in an accredited laboratory by AMCA; The A-weighted sound ratings shown have been calculated per AMCA International Standard 301nances.



### WMF 400 Ex



#### Relative frequency spectrum in ΔdB/Okt

N [1/min]	Octave b. midfreq. [Hz]								
	RPM	63	125	250	500	1K	2K	4K	8K
2 Pole	-6	-6	-9	-9	-8	-13	-14	-19	
4 Pole	-5	-7	-8	-7	-12	-12	-18	-20	
6 Pole	-6	-7	-6	-9	-12	-14	-19	-19	

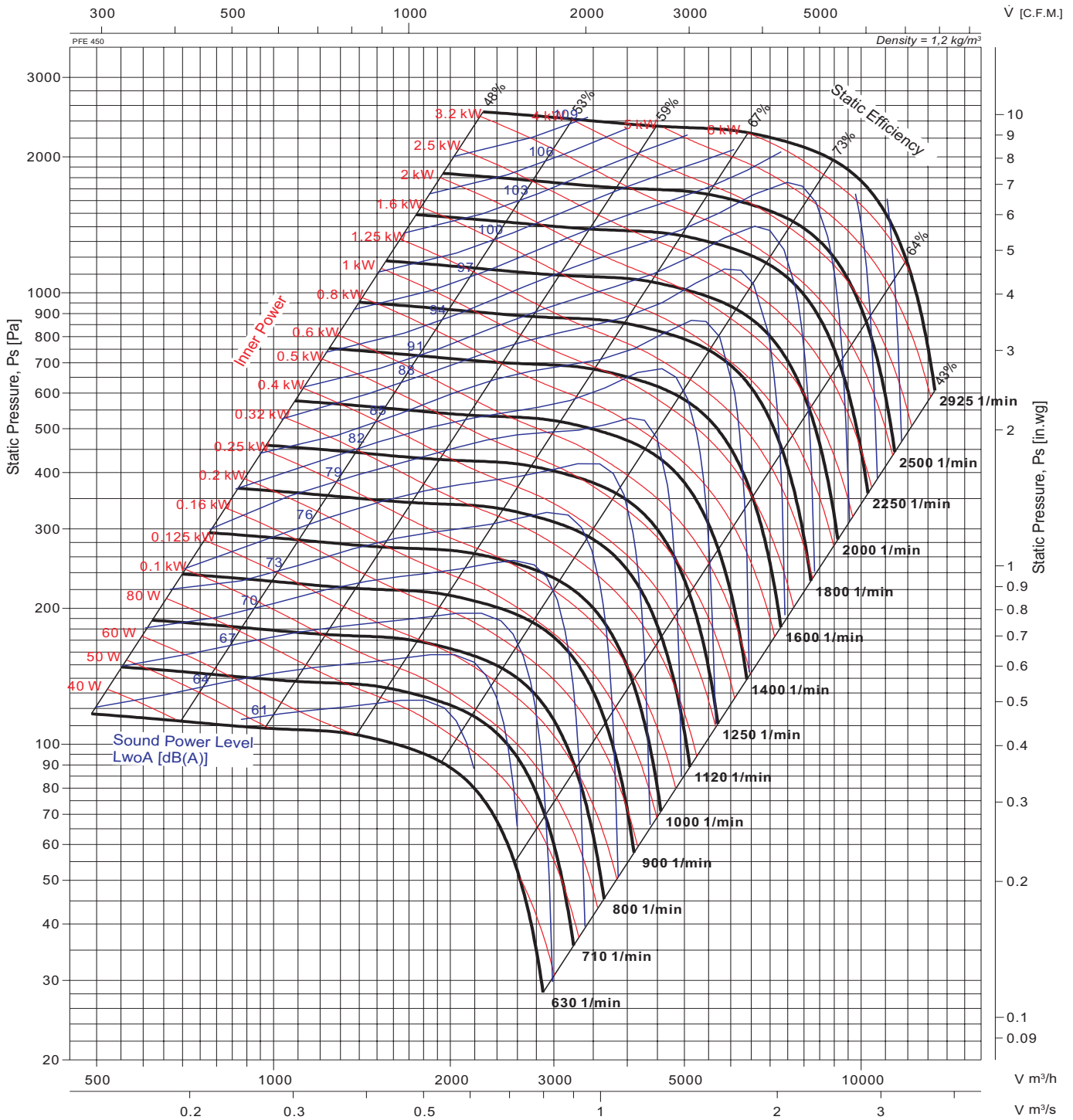


Cert.No.: T123ATEX 353

Air and sound Performance testing was according to AMCA 210 and AMCA 300 with one side open in an accredited laboratory by AMCA; The A-weighted sound ratings shown have been calculated per AMCA International Standard 301nances.



## WMF 450 Ex



### Relative frequency spectrum in ΔdB/Okt

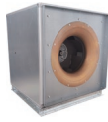
N [1/min]	Octave b. midfreq. [Hz]							
	RPM	63	125	250	500	1K	2K	4K
2 Pole	-14	-14	-8	-8	-7	-6	-9	-15
4 Pole	-14	-8	-8	-7	-6	-9	-15	-22
6 Pole	-11	-8	-7	-6	-7	-12	-19	-26



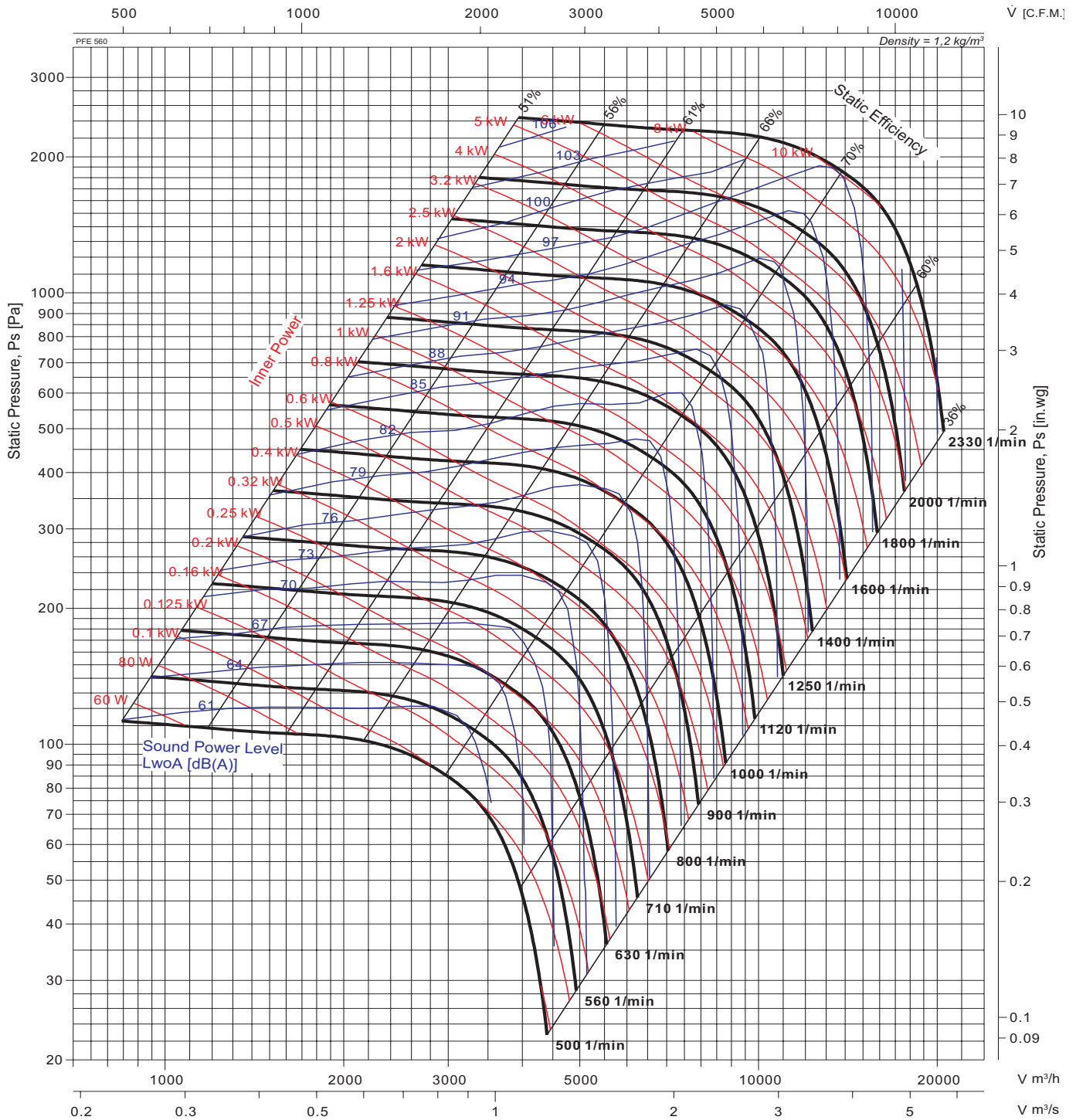
Cert.No.:  
T123ATEX 353

Air and sound Performance testing was according to AMCA 210 and AMCA 300 with one side open in an accredited laboratory by AMCA; The A-weighted sound ratings shown have been calculated per AMCA International Standard 301nances.





## WMF 560 Ex



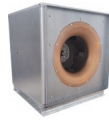
### Relative frequency spectrum in $\Delta\text{dB}/\text{Okt}$

N [1/min]	Octave b. midfreq. [Hz]								
	RPM	63	125	250	500	1K	2K	4K	8K
4 Pole	-13	-8	-7	-7	-6	-9	-16	-23	
6 Pole	-10	-7	-7	-6	-7	-12	-20	-27	

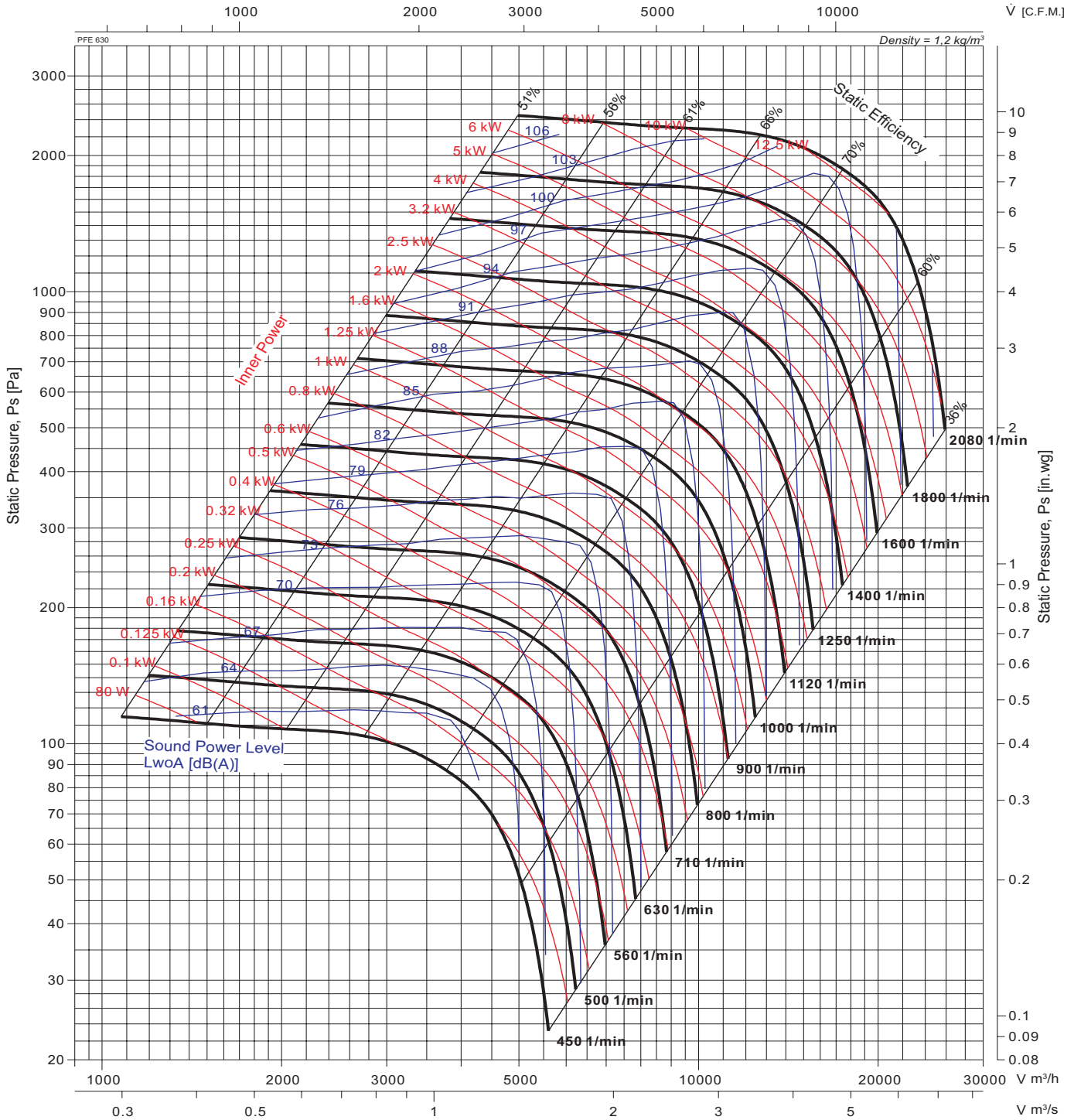


Cert.No.:  
T123ATEX 353

Air and sound Performance testing was according to AMCA 210 and AMCA 300 with one side open in an accredited laboratory by AMCA; The A-weighted sound ratings shown have been calculated per AMCA International Standard 301nances.



### WMF 630 Ex



#### Relative frequency spectrum in ΔdB/Okt

N [1/min]	Octave b. midfreq. [Hz]								
	RPM	63	125	250	500	1K	2K	4K	8K
4 Pole	-12	-8	-7	-7	-6	-9	-16	-23	
6 Pole	-9	-7	-7	-6	-7	-13	-20	-27	
8 Pole	-8	-7	-7	-6	-9	-16	-23	-30	

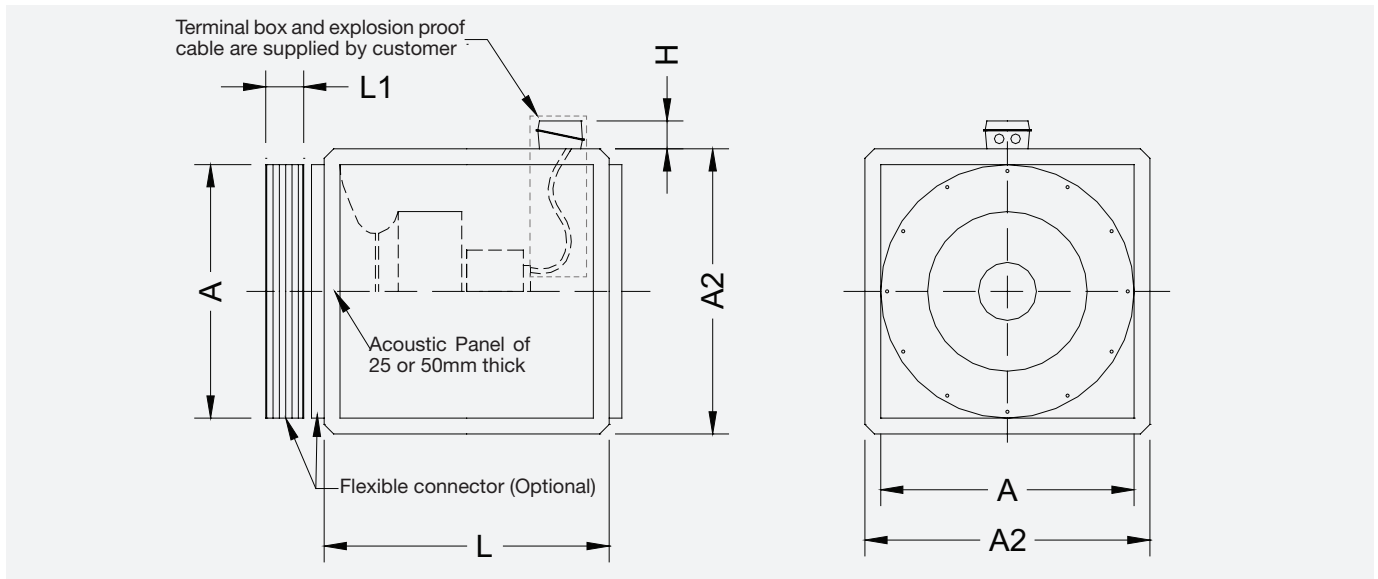


Cert.No.:  
T123ATEX 353

Air and sound Performance testing was according to AMCA 210 and AMCA 300 with one side open in an accredited laboratory by AMCA; The A-weighted sound ratings shown have been calculated per AMCA International Standard 301nances.

# ATEX Explosion Proof - In-Line Centrifugal Fan

## Dimensions



WMF	A	A2				H	L		L1	Weight
		Single Skinned PF25	Double Skinned PF25	Single Skinned PF50	Double Skinned PF50		PF25	PF50		
[mm]	[mm]	[mm]	[mm]	[mm]	[mm]	[mm]	[mm]	[mm]	[mm]	PF50 w/o Motor [kg]
250	450	500	500	550	550	60	450	500	140	30
280	500	550	550	600	600	60	500	550	140	34
315	550	600	600	650	650	60	550	600	140	37
355	600	650	650	700	700	60	600	650	140	41
400	650	700	700	750	750	60	650	700	140	45
450	700	750	750	800	800	60	700	750	140	64
500	800	850	850	900	900	88	800	850	140	81
560	850	900	900	950	950	88	850	900	140	99
630	900	950	950	1000	1000	88	900	950	140	118

\*\* Explosion proof fans with size from 250 to 630 are available upon requested. Certified according to ATEX guideline 94/9/EC as well as EN60079-0, EN1127-1 and 13463-1; Applicable in categorie 2, zone 1 and 2; Ex e increased safety respectively and Ex d = flameproof enclosure; The fans are applicable for group IIA, IIB and IIC and also additional usable for hydrogen; Motor protection by cold conductor. Only certified when connected with a motor protection device.

# Sales Network

## Deutschland

Wolter GmbH.  
Maschinen-und Apparatebau KG.  
DE-76316 Malsch  
T +49 (0) 72 04 / 92 01 0  
F +49 (0) 72 04 / 92 01 11  
info@wolter.eu

## Europe

### Denmark:

L.ØLAND VENTILATION A/S  
DK-2605 Brøndby  
T +45 (0) 70 / 20 19 11  
salg@airforce.dk

### Netherlands:

DE WIT Ventilatoren BV  
NL-3821 CG Amersfoort  
T +31 (0) 33 / 76 00 240  
info@dewitventilatoren.nl

### Sweden:

Nordisk Ventilator AB  
SE-142 50 Skogås  
T +46 (0) 8 / 72 70 250  
se@nordiskventilator.se

### Switzerland:

Anson AG Zürich  
CH-8055 Zürich  
T +41 (0) 44 / 46 11 111  
F +41 (0) 44 / 46 13 111  
info@anson.ch

### OZ Tech SA

CH-1122 Romanel-sur-Morges  
T +41 (0) 76 / 41 11 572  
info@oztech.ch

### United Kingdom:

Wolter (UK) Ltd.  
GB-Leicestershire LE65 1AL  
T +44 (0) 15 30 / 41 24 73  
info@wolteruk.com

## Middle East

### UAE, Saudi Arabia, Qatar, Lebanon:

Please contact Wolter head office

### Wolter GmbH.

Maschinen-und Apparatebau KG.  
DE-76316 Malsch  
T +49 (0) 72 04 / 92 01 0  
F +49 (0) 72 04 / 92 01 11  
info@wolter.eu

## Asia

### China:

Guangdong Wolter Chemco Ventilation Ltd.  
Boluo, Huizhou, Guangdong

Dongguan Wolter Chemco Ventilation Ltd.

Shipai, Dongguan, Guangdong  
T +86 (0) 769 / 8655 7298  
F +86 (0) 769 / 8655 7278  
info@wolter.com.hk

Taizhou Wolter Ventilation Co. Ltd.

Hengjie, Luqiao District,  
Taizhou, Zhejiang  
T +86 (0) 576 / 26 22 666 (26 52 888)  
F +86 (0) 576 / 26 56 830

### China - Hong Kong, Macau:

Wolter Asia Ltd  
Kowloon, Hong Kong  
T +852 (0) 2456 0198  
F +852 (0) 2456 0290  
info@wolter.com.hk

### China - Taiwan:

Waxlink International Co., Ltd.  
8F-2 No.218 Roosevelt Rd.,  
Sec.6, Taipei, Taiwan  
T +886 (0) 2 / 8932 1196  
F +886 (0) 2 / 8932 1197  
waxlink@mail.waxlinktw.com

## India:

Wolter Ventilators India Pvt. Ltd.  
867 D, Block-A, Sushant Lok, Phase-I,  
Gurgaon - 122009 (Haryana)  
T +91 (0) 124 2577797, 4261001-3  
sales@wolterindia.in

## Korea:

Kaceco-Wolter  
14-1, Dang-dong, Gunpo-shi,  
Gyeonggi-do  
T +(82) 0 31 / 4773 104  
F +(82) 0 31 / 4773 132  
wolter@kaceco.com  
info@kaceco.com

## Malaysia:

Vibrantech (M) Sdn Bhd.  
47200 Petaling Jaya Selangor  
T +603 (0) 7847 3500  
F +603 (0) 7847 3380  
sales@vibrantech-sb.com

## Singapore:

Wolter Pte. Ltd.  
SG-569738 Singapore  
T +65 (0) 63 / 52 95 48  
F +65 (0) 63 / 52 95 47  
info@wolterfans.com.sg

## Thailand:

Wolter Ventilation Co., Ltd.  
TH-74130 Samutsakorn  
T +66 (0) 2 / 81 38 484  
F +66 (0) 2 / 81 10 808  
info@wolterventilation.com

## Australia

The Sydney Fan Company.  
NSW 2147, Sydney, Australia  
T +61 (0) 2 / 9624 4000  
F +61 (0) 2 / 9624 4100  
sales@thesydneyfancompany.com

## Wolter GmbH Maschinen-und Apparatebau KG

Am Wasen 11  
DE-76316 Malsch / Germany  
T +49 (0) 72 04 / 92 01 0  
F +49 (0) 72 04 / 92 01 11  
www.wolter.eu  
info@wolter.eu



# *Air in Motion*

Reference: **K01.WMF.Ex**, V2026/February, Printed in February, 2026

**Wolter Asia Ltd.**

Unit 10, 6/F, Blk B, Merit Industrial Centre,  
94 To Kwa Wan Road, Hong Kong.

Tel. +(852) 2456 0198

Fax +(852) 2456 0290

[www.wolter.com.hk](http://www.wolter.com.hk)

[info@wolter.com.hk](mailto:info@wolter.com.hk)

**Guangdong Wolter Chemco Ventilation Ltd.**

Jigongkeng Administrative Zone, Changning,  
Futian, Boluo, Huizhou, Guangdong, P.R.China

**Dongguan Wolter Chemco Ventilation Ltd.**

No.69, Miao Bian Wang Road, Shipai,  
Dongguan, Guangdong, P.R.China

Tel. +(86) 0769 8655 7298

