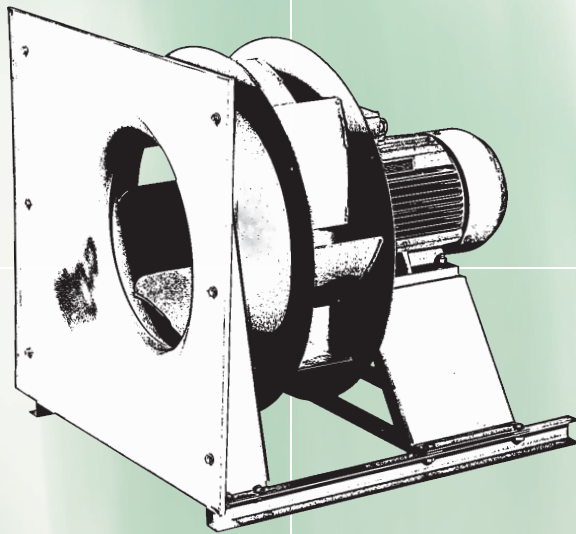


# Plug Fans

- backward curved impellers



Dongguan Wolter Chemco Ventilation Ltd. certifies that the Series PFE shown herein are licensed to bear the AMCA Seal. The ratings shown are based on tests and procedures performed in accordance with AMCA Publication 211 and AMCA Publication 311 and comply with the requirements of the AMCA Certified Ratings Program.

**Air in Motion.**  
Wolter Fans.

**R15**



# Symbols and technical formula symbols



Symbol	Meaning	Symbol	Meaning	Symbol	Meaning
	5-step transformer control		Speed control switch		Wiring diagram
	Continuously adjustable transformer control		Off-Switch		flame proof
	Continuously adjustable electronic control		Weight		Dimensions
	Motor protection switch		Protection class		Accessories

Symbol	Designation	Unit
A	Cross-section	m <sup>2</sup>
C <sub>2</sub>	Flow speed	m/s
C <sub>400V</sub>	Capacitor	μF
D <sub>2</sub>	Impeller diameter	m
d	Pipe diameter	m
d <sub>g</sub>	Equivalent diameter	m
g	Gravitational speed acceleration	m/s <sup>2</sup>
I <sub>N</sub>	Rated current	A
I <sub>A</sub> / I <sub>N</sub>	Ratio of starting current to rated current	
ΔI	Current increase in component voltage area	%
l	Pipe or channel length	m
L <sub>PA</sub>	Sound pressure level A-weighted	dB(A)
L <sub>WA</sub>	Sound power level A-weighted	dB(A)
L <sub>WA</sub>	Sound power level to surrounding	dB(A)
L <sub>WA</sub>	Inlet sound power level induct	dB(A)
L <sub>WA</sub>	Outlet sound power level induct	dB(A)
L <sub>WA5</sub>	Inlet sound power level unducted	dB(A)
L <sub>WA6</sub>	Outlet sound power level unducted	dB(A)
n	Speed	1/min (bzw. 1/s)
P <sub>1</sub>	motor power consumption	kW (bzw. W)
p <sub>s</sub> (p <sub>st</sub> )	Static pressure	Pa
Δ p <sub>st</sub>	Differential static pressure	Pa
Δp <sub>fa min</sub>	min. required conter pressure	Pa
p <sub>d</sub>	Dynamic pressure	Pa
p <sub>d2</sub>	Dynamic pressure at fan outlet	Pa
Δ p <sub>d</sub>	Differential dynamic pressure	Pa
p <sub>t</sub>	Total pressure	Pa
Δ p <sub>t</sub>	Difference of total pressures	Pa
T	Temperature in Kelvin	K
t	Temperature in Celsius	°C
t <sub>R</sub>	max. permissable medium temperature	°C
u <sub>2</sub>	Circumferential speed of the impeller (outside)	m/s
Ṡ	Volume flow	m <sup>3</sup> /h (bzw. m <sup>3</sup> /s)
ρ	Density of medium	kg/m <sup>3</sup>
η	Efficiency	-
φ	Volume number	-
ψ	Pressure number	-
ζ	Coefficient of drag	-
λR	Coefficient of friction of channel or pipe	-

## Table of Content

---

Symbols and technical formula symbols	Page II
Contents	Page 1
Technical Description	Page 2
Impeller	Page 2
Inlet Cone	Page 2
Overlap	Page 2
Assembly	Page 2
Sound Levels	Page 2
Performance Curves	Page 2
Delivery Options	Page 2
Accessories	Page 2
Dimensions	Page 3 - 4
Fan Efficiency Grade	Page 5
Performance curves	Page 6 - 20

---

Subject to change without prior notice.

# Technical Description

## Impeller

The centrifugal plug fan impellers are made of steel / aluminum / thermoplastic material with backward curve blades. The impeller is aerodynamically designed for high efficiency and low power consumption. The maximum tip speed of the impeller is 70m/s. The impellers are optimized for stable performance and low noise and balanced according to G2.5 to DIN ISO 1940/1 or AMCA 204.

The impeller come with either GG-hub or precision-cast-aluminum alloy hub with steel insert for use with taper lock bushes. GG-hub or Precision-cast- aluminum alloy with straight bore hole are also available upon request. The blades are made of powder coated steel / GI sheet steel / aluminum / thermoplastic.

## Inlet Cone

The inlet cone is made of powder coated / GI sheet steel / thermoplastic. The inlet cone allows a uniform and stable airflow into the impeller assuring cataloged performance.

## Overlap

The overlap distance is determined by empirical and airflow tests which take into account the aerodynamic characteristics of the impeller.

## Assembly

The complete assembly consists of the motor, impeller and inlet cone. The mounting base is manufactured from galvanized steel sheet.

## Sound levels

In order to make possible an assessment of sound projection adequate to the human ear the A-assessed description of sound levels has been chosen. The ascertaining of the sound power level follows the reverberant room method according to AMCA 300. The sound power levels shown on each performance curve, LwoA, refer to the overall sound power "A-Weighted" levels. The computed sound power levels were converted into A-Weighted levels using adjustments to the octave band spectrum as follows:

Centre Frequency Hz	63	125	250	500	1000	2000	4000	8000
A-Weighted Adjustment	-26.2	-16.1	-8.6	-3.2	0	1.2	1.0	-1.1

The overall sound pressure levels, LpoA, can be calculated from the overall sound power levels as follows:

- 1) Free Field Conditions:  $L_{poA} = L_{woA} - (20 \log_{10} d) - 11$
- 2) Room Conditions:  $L_{poA} = L_{woA} - (20 \log_{10} d) - 7$

Where: d = distance from fan in meters

## Performance curves

The performance curves have been established using the inlet test method in the test chamber according to AMCA 210 installation Type A (free inlet, free outlet).

The curves indicate as a function of the volume flow:

- ▶ the static pressure increase  $p_s$  for constant speed (heave black lines)
- ▶ constant lines of shaft power  $P_w$  (red Lines)
- ▶ constant lines of sound power level LwoA (blue lines)

All values relate to an air density:  $\rho = 1,2 \text{ kg/m}^3 \text{ at } 20^\circ\text{C}$

The dynamic pressure  $p_{d2}$  and the flow speed  $c_2$  respectively stated in the diagrams refer to the outlet of impeller.

## Delivery Options

There are 3 different options:

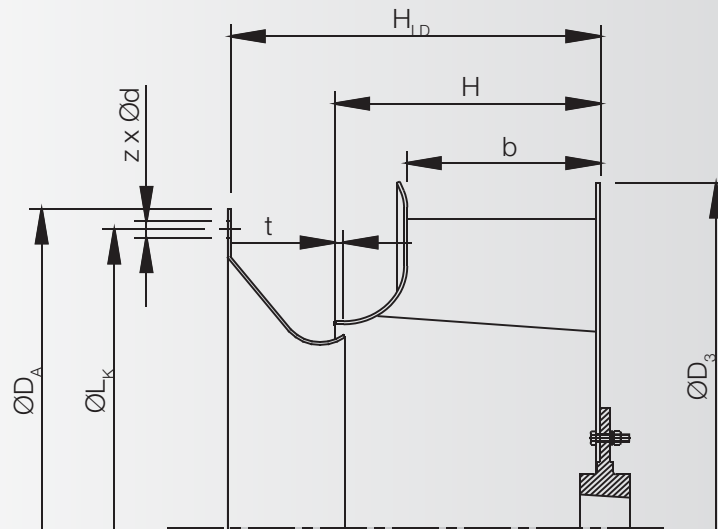
- a) Impeller with inlet cone
- b) Impeller with inlet cone + Mounting assembly
- c) Impeller with inlet cone + Mounting assembly + Motor

## Accessories

The following accessories are available:

- 1) Elastic Flexible connectors
- 2) Damper
- 3) Adjustable sliding (mechanical type) for air volume regulation and control
- 4) Acoustic or single skin enclosure

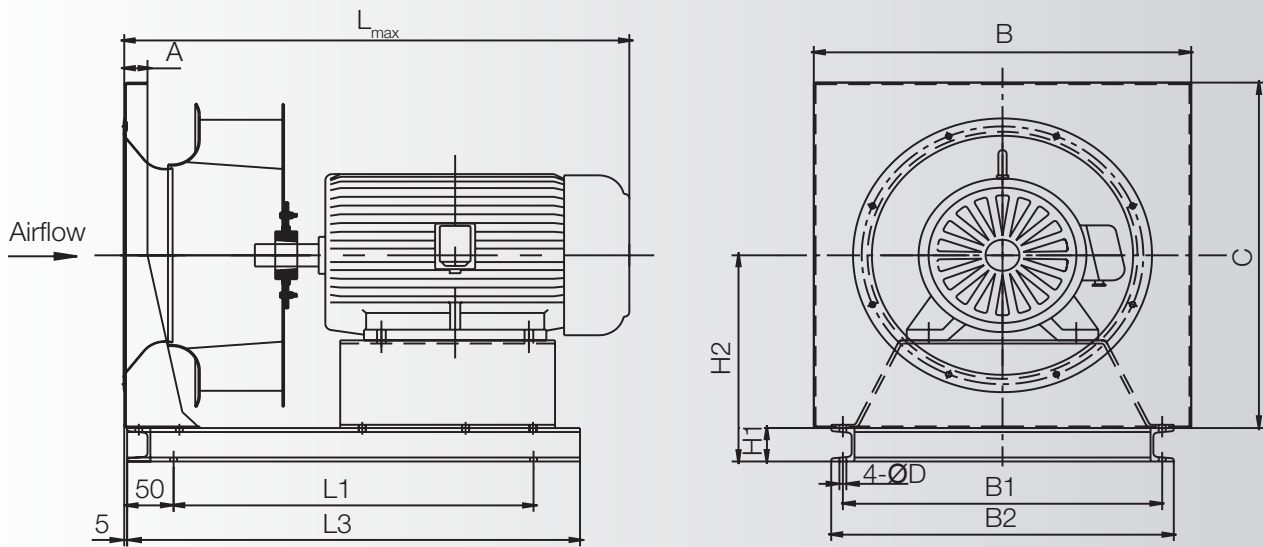
# Dimensions



Size	b [mm]	H [mm]	$\text{ØD}_A$ [mm]	$\text{ØD}_3$ [mm]	$\text{ØL}_k$ [mm]	t [mm]	z x Ød [mm]	$H_{LD}$ [mm]	$n_{max}$ [1/min]
280	82	117	300	323	280	4	6 x 7	169	4650
315	92	126	355	360	325	5	6 x 7	178	3990
355	100	144	383	406	344	6	6 x 7	196	3650
400	112	160	423	456	386	7	6 x 7	220	3255
450	126	179	466	512	432	7	6 x 7	243	2925
500	139	200	515	570	485	8	8 x 9	277	2580
560	160	229	570	640	544	8	8 x 9	314	2330
630	180	253	635	720	605	9	8 x 9	353	2080
710	202	283	700	810	670	10	8 x 9	394	1810
800	227	320	778	912	750	12	12 x 12	447	1630
900	255	357	875	1023	844	14	12 x 12	503	1460
1000	282	400	980	1120	945	16	12 x 12	561	1310
1120	316	448	1044	1254	1080	16	12 x 12	639	1200
1250	352	502	1220	1400	1180	18	14 x 14	696	1100
1400	395	564	1360	1568	1310	18	14 x 14	796	1000

Note: We reserve the right to alter measurements without notice in case of technical improvements.

# Dimensions



Size	A [mm]	B [mm]	B1 [mm]	B2 [mm]	C [mm]	D [mm]	H1 [mm]	H2 [mm]	L <sub>max.</sub> [mm]	L1 [mm]	L3 [mm]	Mtr Frm Size
280	35	396	310	346	396	14	50	248	640	360	465	71-100
315	35	440	360	396	440	14	50	270	650	360	465	71-112
355	35	480	400	436	480	14	50	290	650	300 380	425 505	71-80 90-112
400	35	520	450	486	520	14	50	310	790	400 500	525 625	80-112 132
450	35	590	510	546	590	14	50	345	815	400 500	525 625	90-112 132
500	40	650	550	590	650	14	63	388	990	440 620	605 785	90-112 132-160
560	40	720	610	650	720	14	63	423	1030	460 660	625 825	90-112 132-160
630	45	800	685	725	800	14	63	463	1070	510 700	675 865	112 132-160
710	50	880	770	810	880	18	80	520	1175	600 740	805 945	112-132 160-180
800	50	1000	850	890	1000	18	80	580	1230	650 800	860 1010	132 160-180
900	50	1120	960	1000	1120	18	80	610	1290	700 900	910 1110	132 160-180
1000	50	1250	1080	1120	1250	18	80	705	1415	1000	1210	160-200
1120	60	1400	1210	1250	1400	18	100	800	1710	1200 1400	1410 1610	200-225 250-280
1250	60	1560	1360	1400	1560	18	100	880	1860	1300 1500	1510 1710	225-250 280-315
1400	60	1750	1500	1540	1750	18	100	945	2010	1400 1600	1610 1810	250 280-315

Note: We reserve the right to alter measurements without notice in case of technical improvements.

# AMCA - FEG Rating

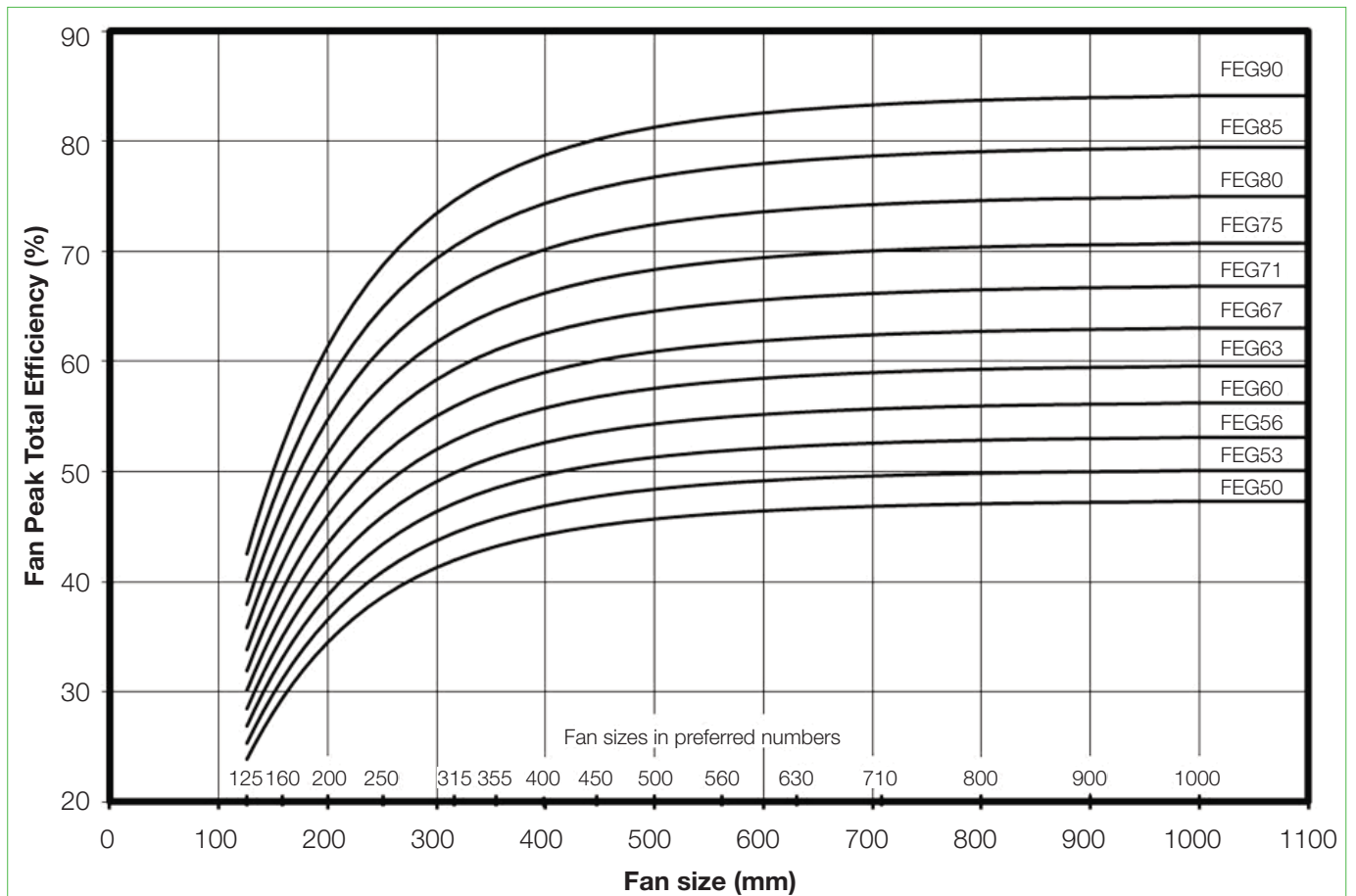
Fan Efficiency Grade: PFE Series



Certified FEGs are determined in accordance with AMCA 205-12 Energy Efficiency Classification for fans. In conjunction with AMCA 211-13 (Rev. 2015) Certified Ratings Program, Product Rating Manual for Fan Air Performance. This classification is based on fan peak (optimum) total efficiency for a given fan speed, fan size and application category. For the purpose of energy classification, the peak efficiency can be determined at a speed not higher than the maximum design speed of the fan.

The AMCA Certified Ratings Seal applies to the Fan Efficiency Grade (FEG) for PFE series Inline Centrifugal Plug Fan model PFE 280 to PFE 1400 as shown in the table below.

Fan Model No.	Max. Fan Speed (rpm)	Fan Outlet Area (m2)	Fan Efficiency Grade (FEG)	Fan Model No.	Max. Fan Speed (rpm)	Fan Outlet Area (m2)	Fan Efficiency Grade (FEG)
PFE 280	4650	0.0750	90	PFE 710	1810	0.4582	80
PFE 315	3990	0.0945	90	PFE 800	1630	0.5776	80
PFE 355	3650	0.1147	90	PFE 900	1460	0.7290	80
PFE 400	3255	0.1443	85	PFE 1000	1310	0.8904	80
PFE 450	2925	0.1825	85	PFE 1120	1200	1.1198	80
PFE 500	2580	0.2227	85	PFE 1250	1100	1.3911	80
PFE 560	2330	0.2875	80	PFE 1400	1000	1.7472	80
PFE 630	2080	0.3630	80				





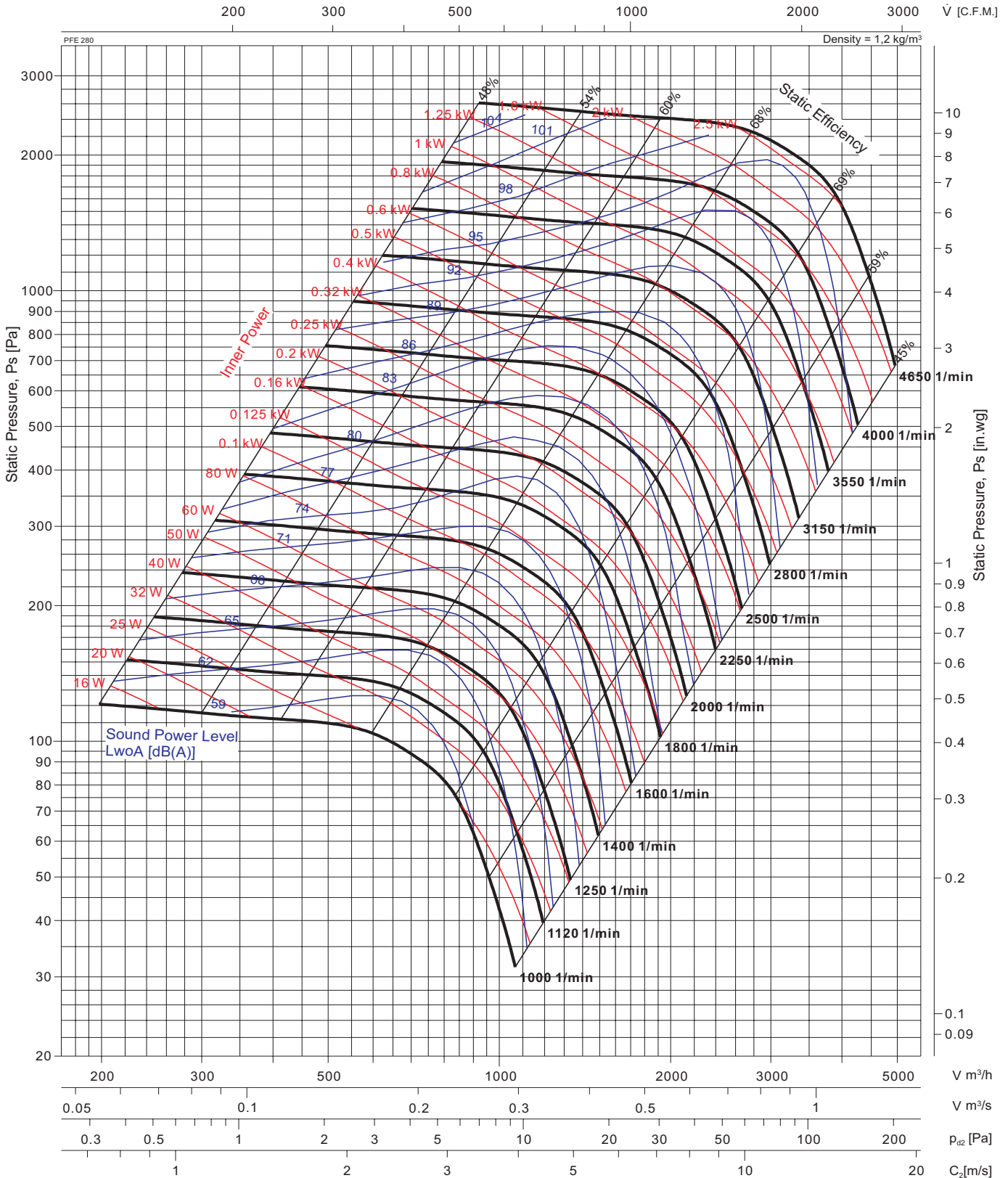
# Performance Curve

## PFE 280



Fan test laboratory AMCA 210 Test Chamber. Performance certified is for installation type A-Free inlet, Free outlet. Performance ratings do not include the effects of appurtenances (accessories).

The A-weighted sound ratings shown have been calculated per AMCA International Standard 301. Values shown are for outlet LwOA sound power levels for installation Type A: free inlet, free outlet.



<b>Typ</b>	<b>Art.Nr.</b>	<b>█ [kg]</b>	<b>Typ</b>	<b>Art.Nr.</b>	<b>█ [kg]</b>	Wheel diameter	<b>D =</b>	291 mm
PFE 280		26				Number of blades	<b>z =</b>	6
						Outlet Area	<b>A =</b>	0.0750 m²
						Moment of inertia	<b>J =</b>	0.056 kg·m²
						Speed limit	<b>n<sub>max</sub> =</b>	4650 1/min

Explanation of symbols see page II



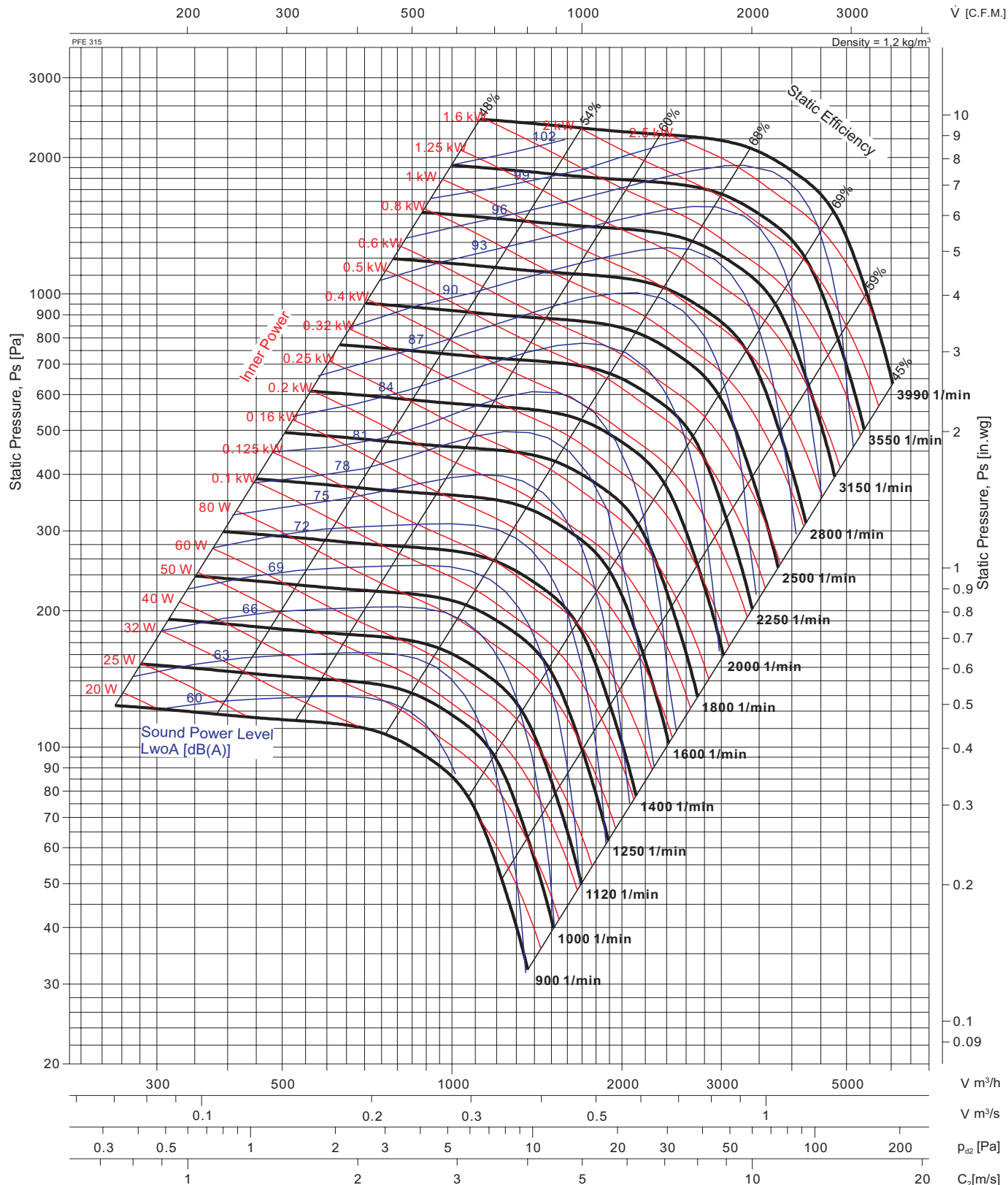
# Performance Curve

## PFE 315



Fan test laboratory AMCA 210 Test Chamber. Performance certified for installation type A-Free inlet, Free outlet. Performance ratings do not include the effects of appurtenances (accessories).

The A-weighted sound ratings shown have been calculated per AMCA International Standard 301. Values shown are for outlet LwoA sound power levels for installation Type A: free inlet, free outlet.



Typ	Art.Nr.	█ [kg]	Typ	Art.Nr.	█ [kg]	Wheel diameter <b>D</b> = 327 mm	
PFE 315		37				Number of blades <b>z</b> = 6	
						Outlet Area <b>A</b> = 0,0945 m <sup>2</sup>	
						Moment of inertia <b>J</b> = 0.076 kg·m <sup>2</sup>	
						Speed limit <b>n<sub>max</sub></b> = 3990 1/min	

Explanation of symbols see page II



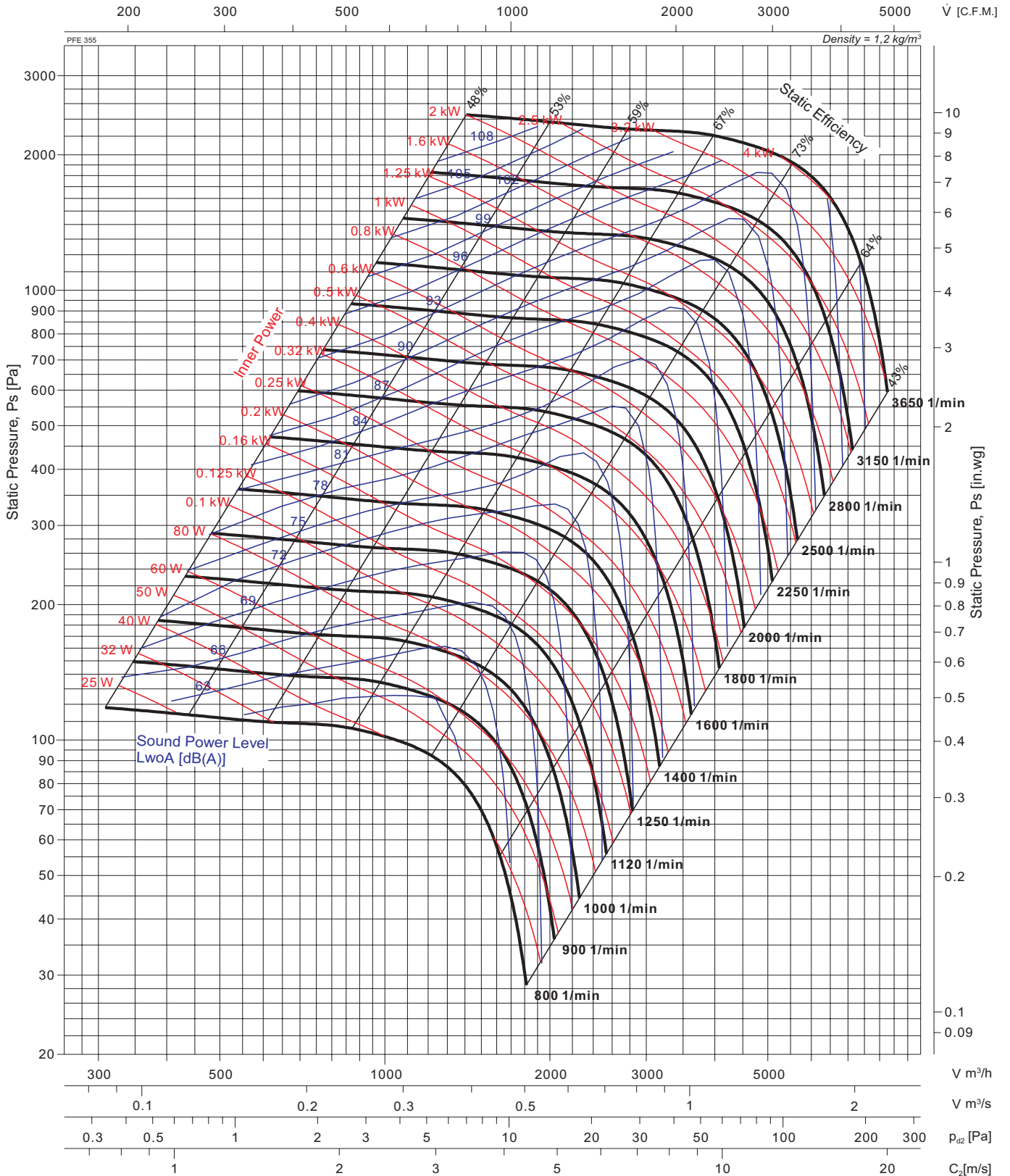
# Performance Curve

## PFE 355



Fan test laboratory AMCA 210 Test Chamber. Performance certified is for installation type A-Free inlet, Free outlet. Performance ratings do not include the effects of appurtenances (accessories).

The A-weighted sound ratings shown have been calculated per AMCA International Standard 301. Values shown are for outlet LwoA sound power levels for installation Type A: free inlet, free outlet.



Typ	Art.Nr.	█ [kg]	Typ	Art.Nr.	█ [kg]	Wheel diameter	D =	365	mm
PFE 355		40				Number of blades	z =	6	
						Outlet Area	A =	0.1147	m <sup>2</sup>
						Moment of inertia	J =	0.136	kg·m <sup>2</sup>
						Speed limit	n <sub>max</sub> =	3650	1/min

Explanation of symbols see page II



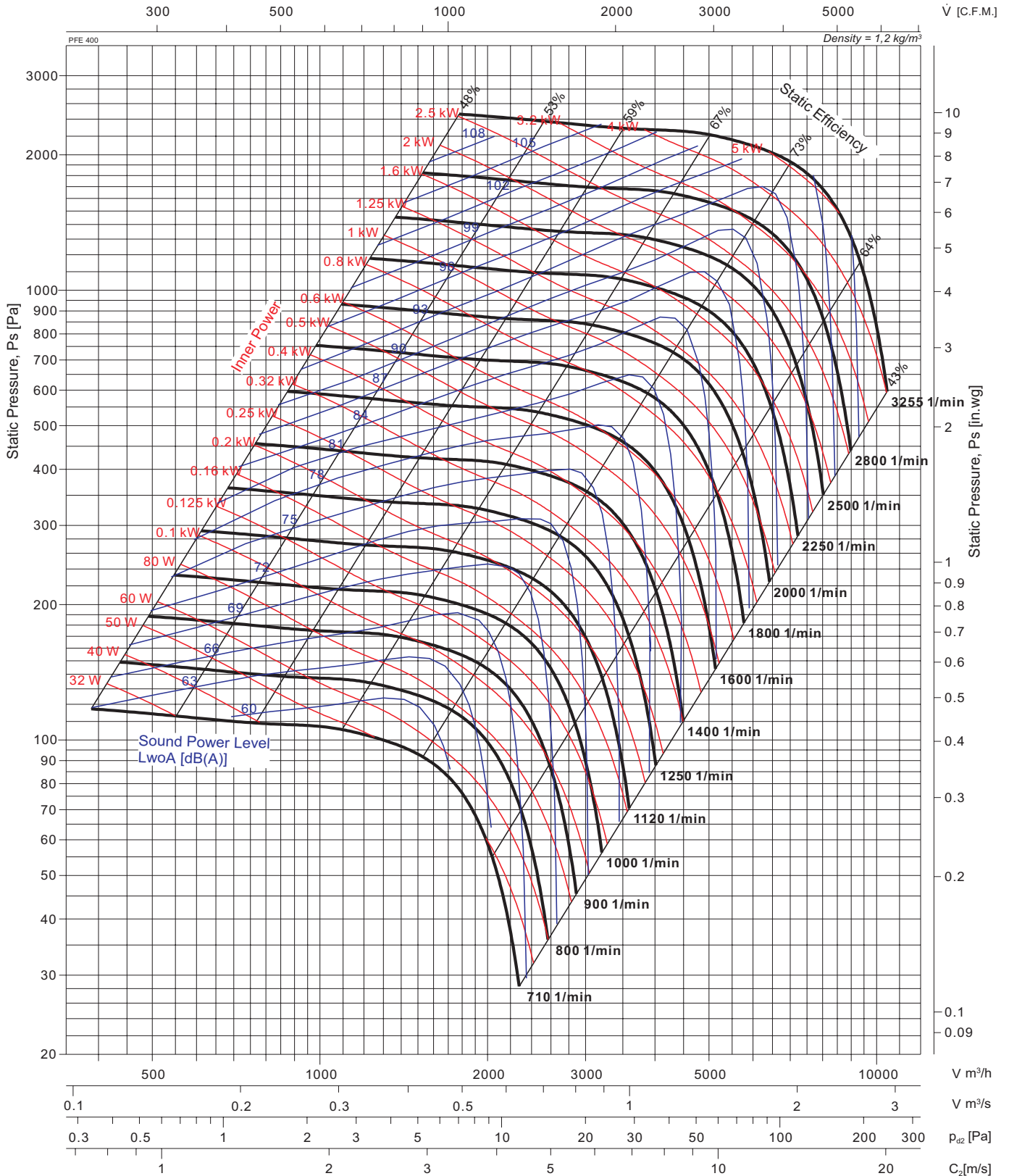
# Performance Curve

## PFE 400



Fan test laboratory AMCA 210 Test Chamber. Performance certified is for installation type A-Free inlet, Free outlet. Performance ratings do not include the effects of appurtenances (accessories).

The A-weighted sound ratings shown have been calculated per AMCA International Standard 301. Values shown are for outlet LwoA sound power levels for installation Type A: free inlet, free outlet.



Typ	Art.Nr.	█ [kg]	Typ	Art.Nr.	█ [kg]	Wheel diameter <b>D</b> = 410 mm	
PFE 400		50				Number of blades <b>z</b> = 6	
						Outlet Area <b>A</b> = 0.1443 m²	
						Moment of inertia <b>J</b> = 0.208 kg·m²	
						Speed limit <b>n<sub>max</sub></b> = 3255 1/min	

Explanation of symbols see page II



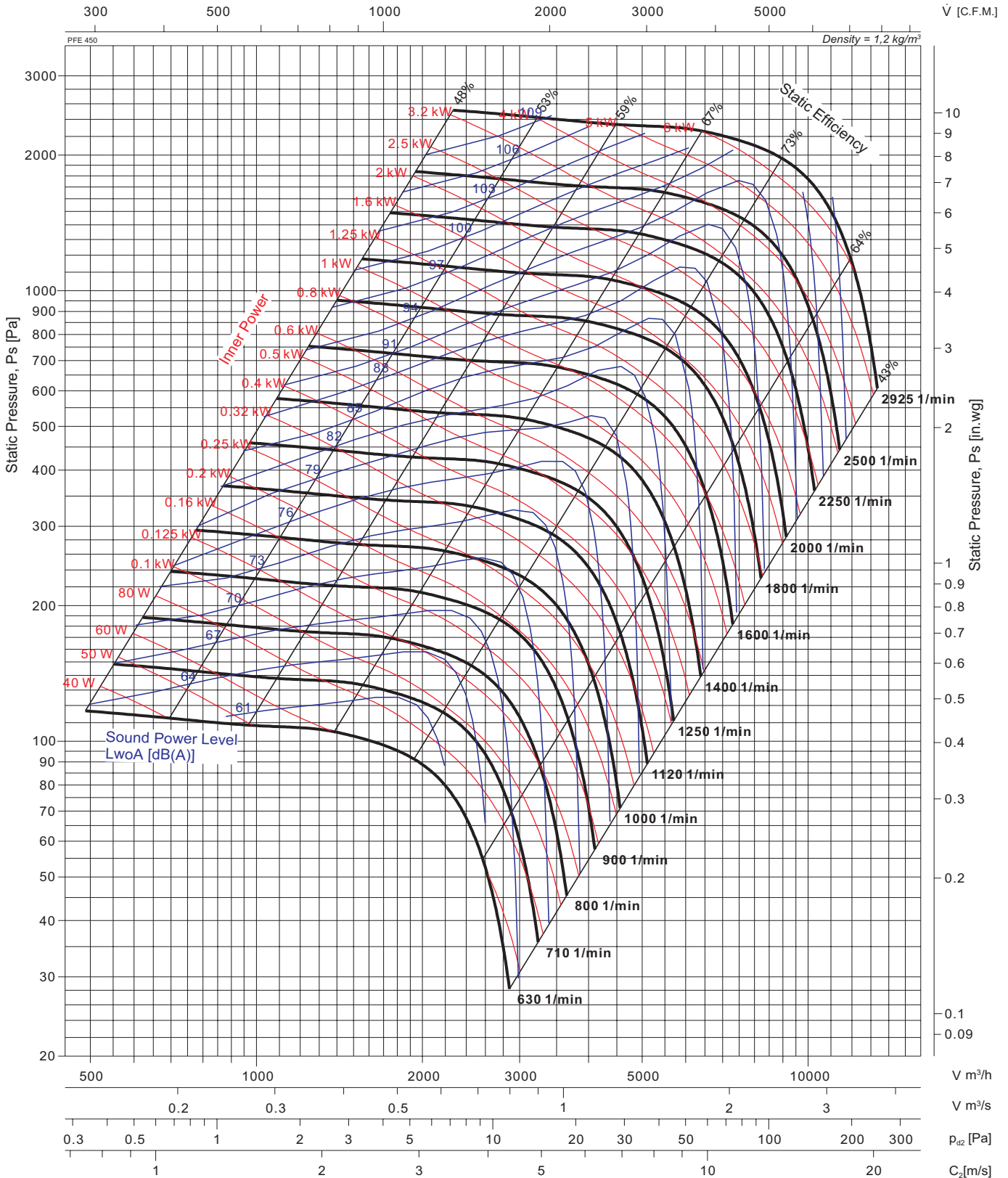
# Performance Curve

## PFE 450



Fan test laboratory AMCA 210 Test Chamber. Performance certified is for installation type A-Free inlet, Free outlet. Performance ratings do not include the effects of appurtenances (accessories).

The A-weighted sound ratings shown have been calculated per AMCA International Standard 301. Values shown are for outlet LwoA sound power levels for installation Type A: free inlet, free outlet.



Typ	Art.Nr.	█ [kg]	Typ	Art.Nr.	█ [kg]	Wheel diameter	D =	461	mm
PFE 450		60				Number of blades	z =	6	
						Outlet Area	A =	0.1825	m <sup>2</sup>
						Moment of inertia	J =	0.393	kg·m <sup>2</sup>
						Speed limit	n <sub>max</sub> =	2925	1/min

Explanation of symbols see page II



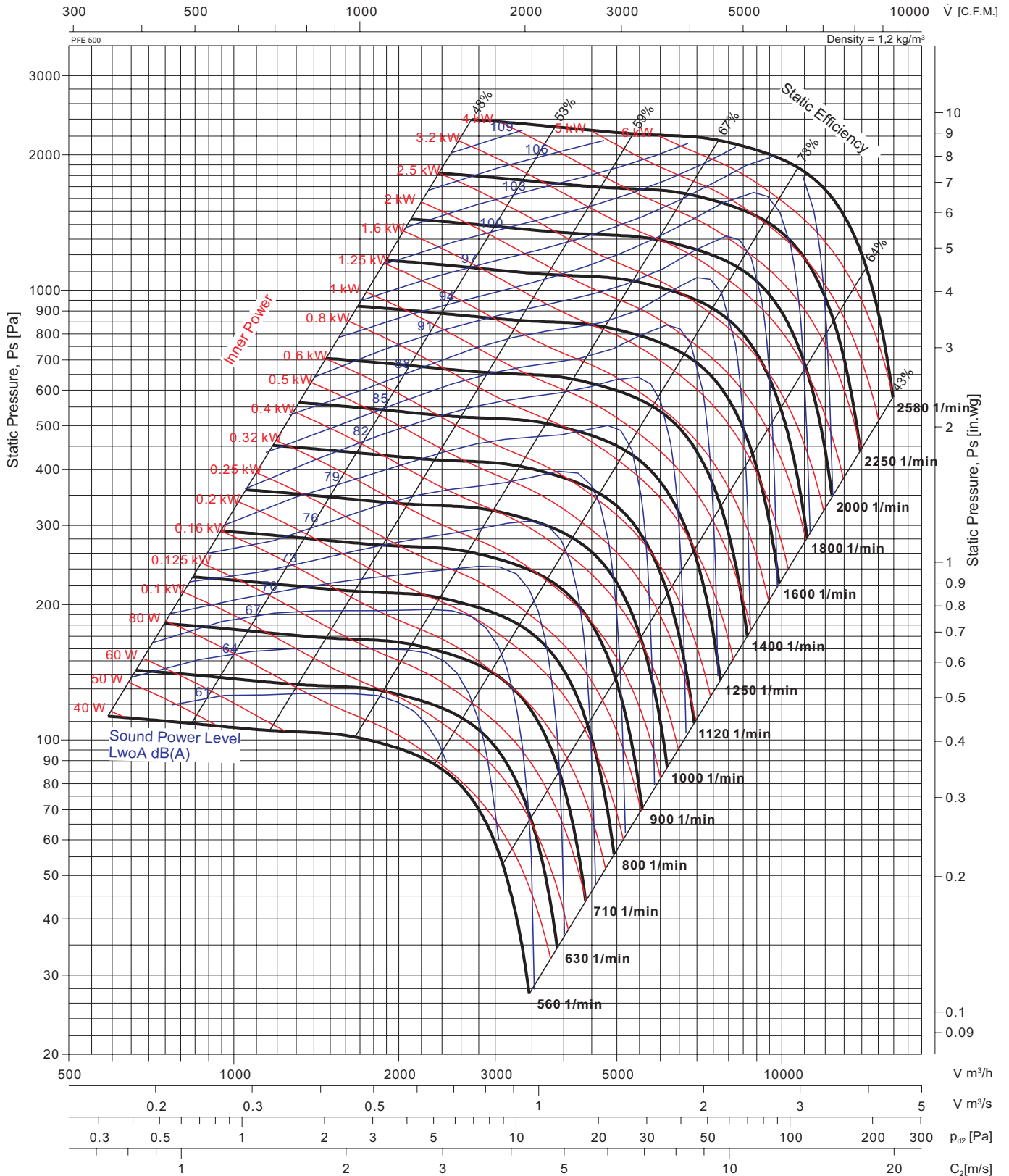
# Performance Curve

## PFE 500



Fan test laboratory AMCA 210 Test Chamber. Performance certified is for installation type A-Free inlet, Free outlet. Performance ratings do not include the effects of appurtenances (accessories).

The A-weighted sound ratings shown have been calculated per AMCA International Standard 301. Values shown are for outlet LwoA sound power levels for installation Type A: free inlet, free outlet.



Typ	Art.Nr.	█ [kg]	Typ	Art.Nr.	█ [kg]	Wheel diameter <b>D</b> = 510 mm	
PFE 500		75				Number of blades <b>z</b> = 6	
						Outlet Area <b>A</b> = 0.2227 m²	
						Moment of inertia <b>J</b> = 0.567 kg·m²	
						Speed limit <b>n<sub>max</sub></b> = 2580 1/min	

Explanation of symbols see page II



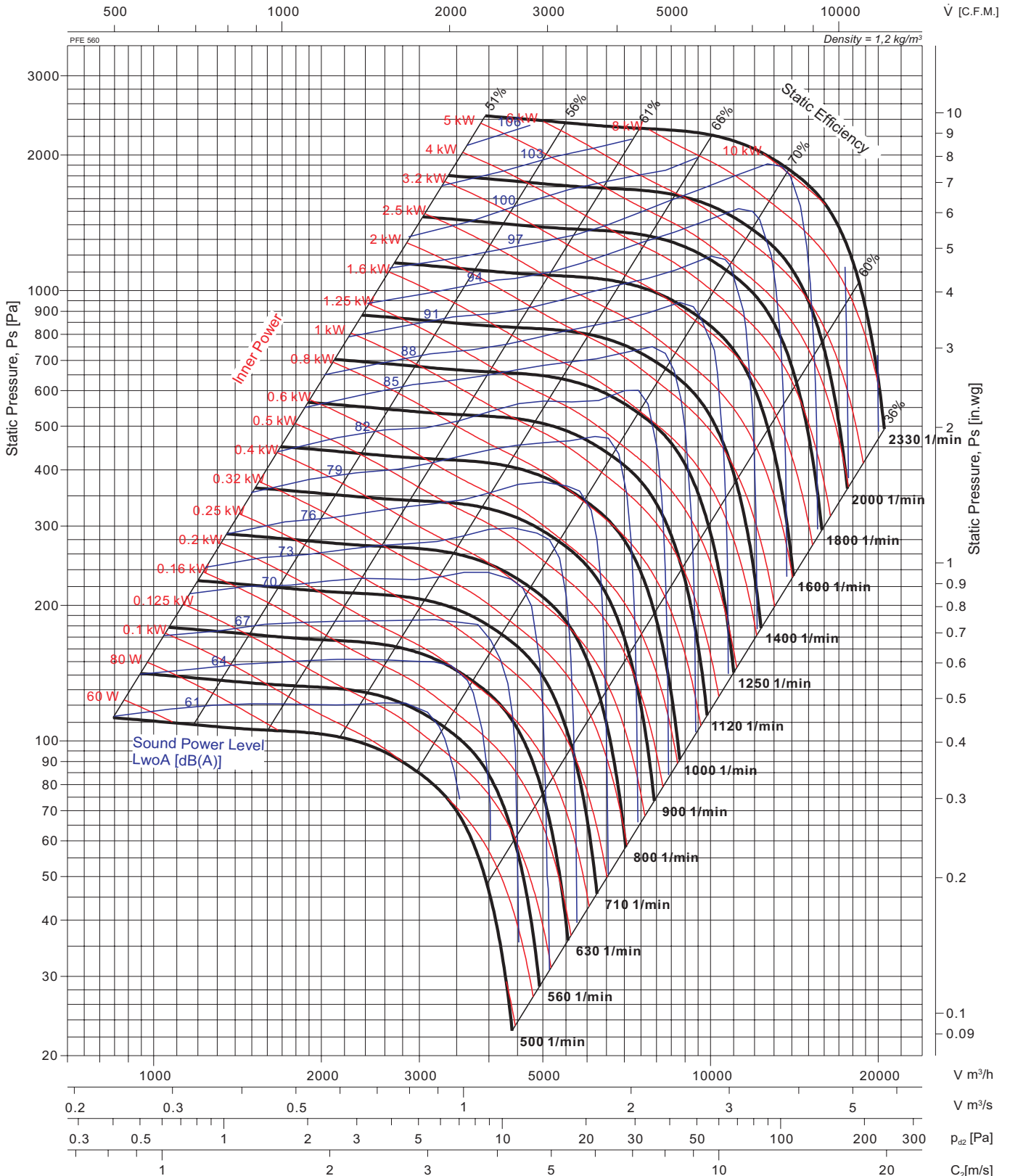
# Performance Curve

## PFE 560



Fan test laboratory AMCA 210 Test Chamber. Performance certified is for installation type A-Free inlet, Free outlet. Performance ratings do not include the effects of appurtenances (accessories).

The A-weighted sound ratings shown have been calculated per AMCA International Standard 301. Values shown are for outlet LwoA sound power levels for installation Type A: free inlet, free outlet.



Typ	Art.Nr.	█ [kg]	Typ	Art.Nr.	█ [kg]	Wheel diameter	D =	572	mm
PFE 560		85				Number of blades	z =	6	
						Outlet Area	A =	0.2875	m²
						Moment of inertia	J =	0.992	kg·m²
						Speed limit	n <sub>max</sub> =	2330	1/min

Explanation of symbols see page II



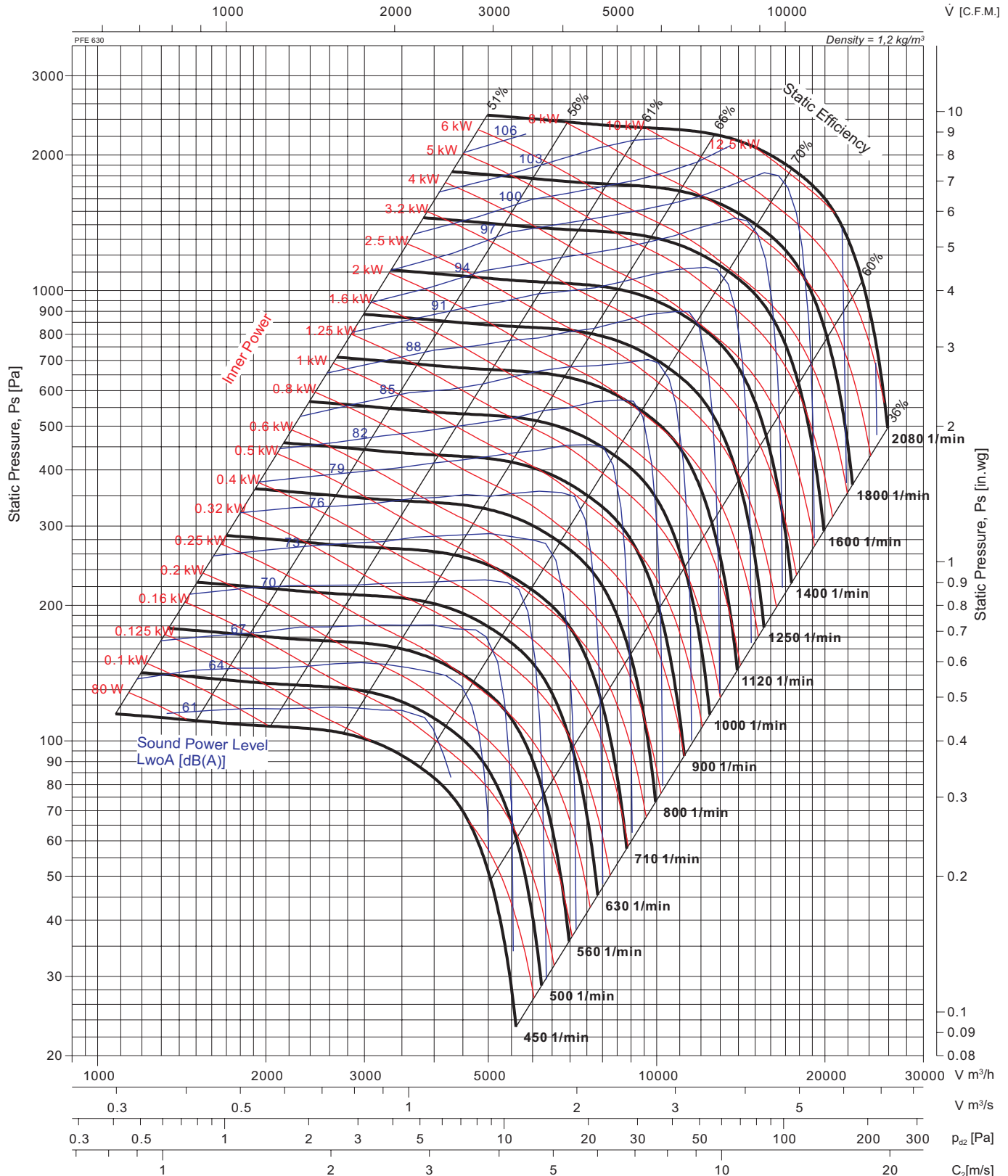
# Performance Curve

## PFE 630



Fan test laboratory AMCA 210 Test Chamber. Performance certified for installation type A-Free inlet, Free outlet. Performance ratings do not include the effects of appurtenances (accessories).

The A-weighted sound ratings shown have been calculated per AMCA International Standard 301. Values shown are for outlet LwOA sound power levels for installation Type A: free inlet, free outlet.



Typ	Art.Nr.	█ [kg]	Typ	Art.Nr.	█ [kg]	Wheel diameter <b>D</b> = 642 mm	
PFE 630		105				Number of blades <b>z</b> = 6	
						Outlet Area <b>A</b> = 0.3630 m <sup>2</sup>	
						Moment of inertia <b>J</b> = 1.602 kg·m <sup>2</sup>	
						Speed limit <b>n<sub>max</sub></b> = 2080 1/min	

Explanation of symbols see page II



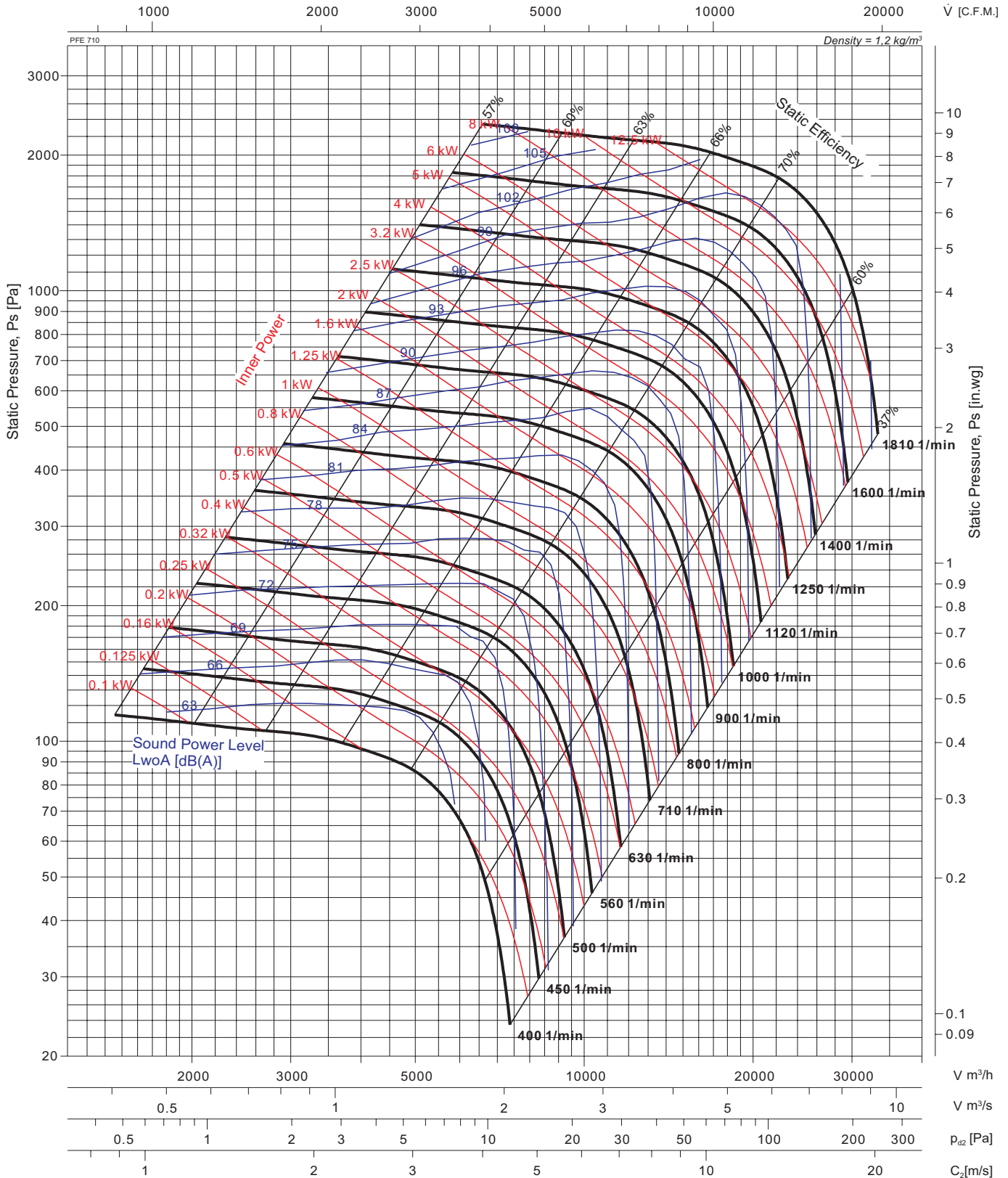
# Performance Curve

## PFE 710



Fan test laboratory AMCA 210 Test Chamber. Performance certified is for installation type A-Free inlet, Free outlet. Performance ratings do not include the effects of appurtenances (accessories).

The A-weighted sound ratings shown have been calculated per AMCA International Standard 301. Values shown are for outlet LwoA sound power levels for installation Type A: free inlet, free outlet.



Typ	Art.Nr.	█ [kg]	Typ	Art.Nr.	█ [kg]	Wheel diameter	D =	722	mm
PFE 710		130				Number of blades	z =	6	
						Outlet Area	A =	0.4582	m²
						Moment of inertia	J =	2.723	kg·m²
						Speed limit	n <sub>max</sub> =	1810	1/min

Explanation of symbols see page II



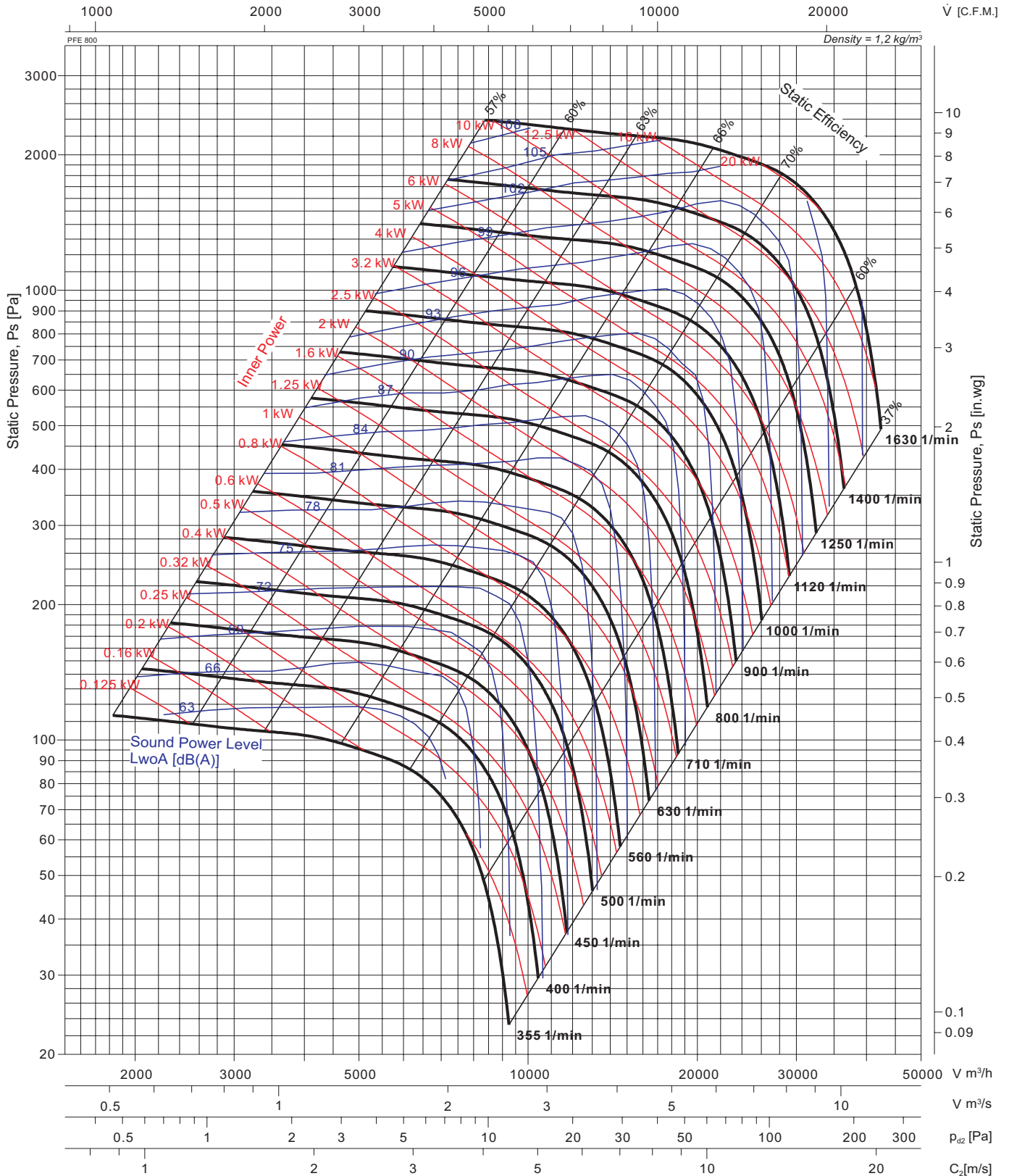
# Performance Curve

## PFE 800



Fan test laboratory AMCA 210 Test Chamber. Performance certified is for installation type A-Free inlet, Free outlet. Performance ratings do not include the effects of appurtenances (accessories).

The A-weighted sound ratings shown have been calculated per AMCA International Standard 301. Values shown are for outlet LwoA sound power levels for installation Type A: free inlet, free outlet.



Typ	Art.Nr.	█ [kg]	Typ	Art.Nr.	█ [kg]	Wheel diameter <b>D</b> = 810 mm	
PFE 800		200				Number of blades <b>z</b> = 6	
						Outlet Area <b>A</b> = 0.5776 m²	
						Moment of inertia <b>J</b> = 5.034 kg·m²	
						Speed limit <b>n<sub>max</sub></b> = 1630 1/min	

Explanation of symbols see page II



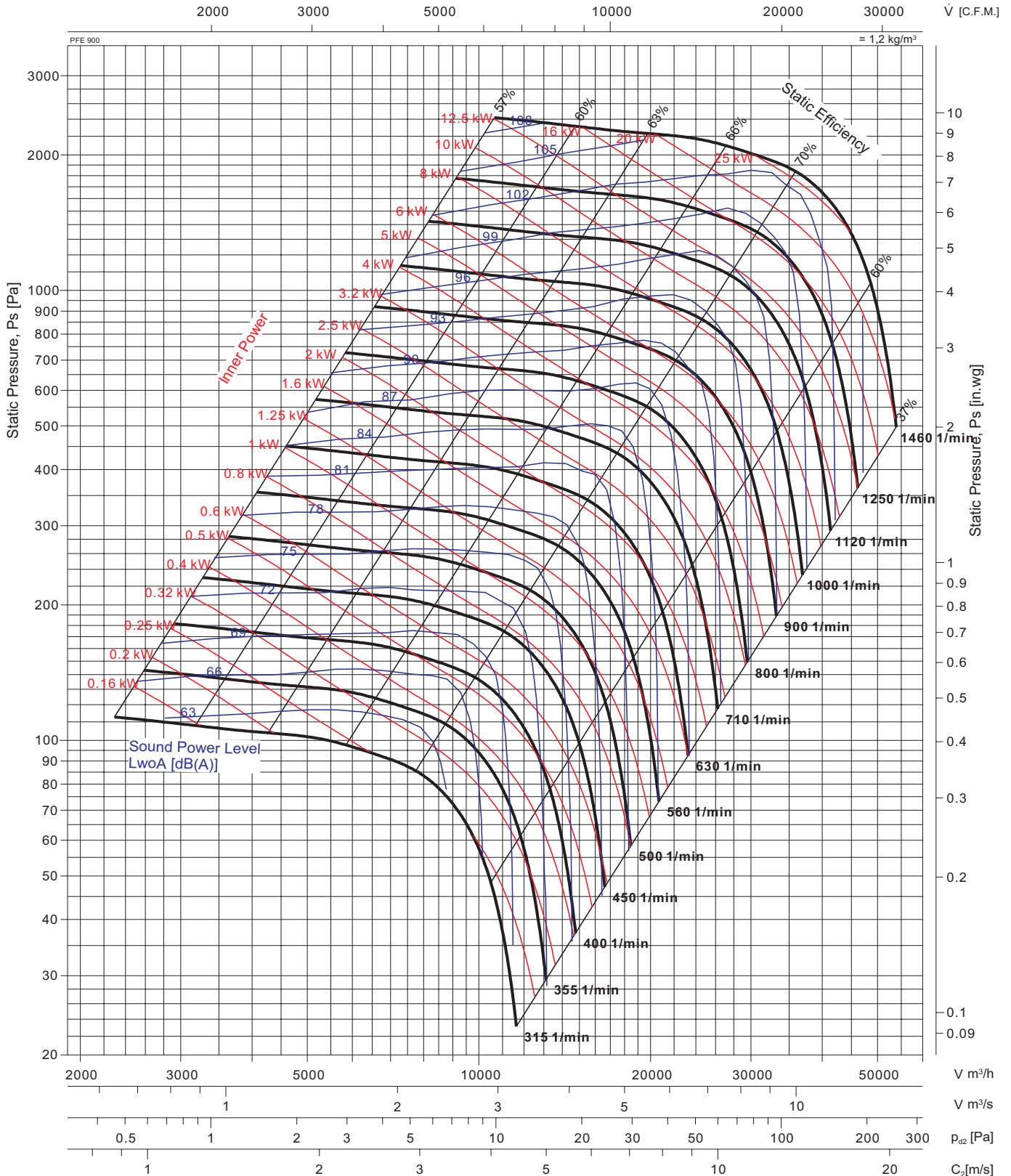
# Performance Curve

## PFE 900



Fan test laboratory AMCA 210 Test Chamber. Performance certified is for installation type A-Free inlet, Free outlet. Performance ratings do not include the effects of appurtenances (accessories).

The A-weighted sound ratings shown have been calculated per AMCA International Standard 301. Values shown are for outlet LwoA sound power levels for installation Type A: free inlet, free outlet.



Typ	Art.Nr.	█ [kg]	Typ	Art.Nr.	█ [kg]	Wheel diameter	D =	910	mm
PFE 900		280				Number of blades <td>z =</td> <td>6</td> <td></td>	z =	6	
						Outlet Area <td>A =</td> <td>0.7290</td> <td>m<sup>2</sup></td>	A =	0.7290	m <sup>2</sup>
						Moment of inertia <td>J =</td> <td>9.214</td> <td>kg·m<sup>2</sup></td>	J =	9.214	kg·m <sup>2</sup>
						Speed limit <td>n<sub>max</sub> =</td> <td>1460</td> <td>1/min</td>	n <sub>max</sub> =	1460	1/min

Explanation of symbols see page II



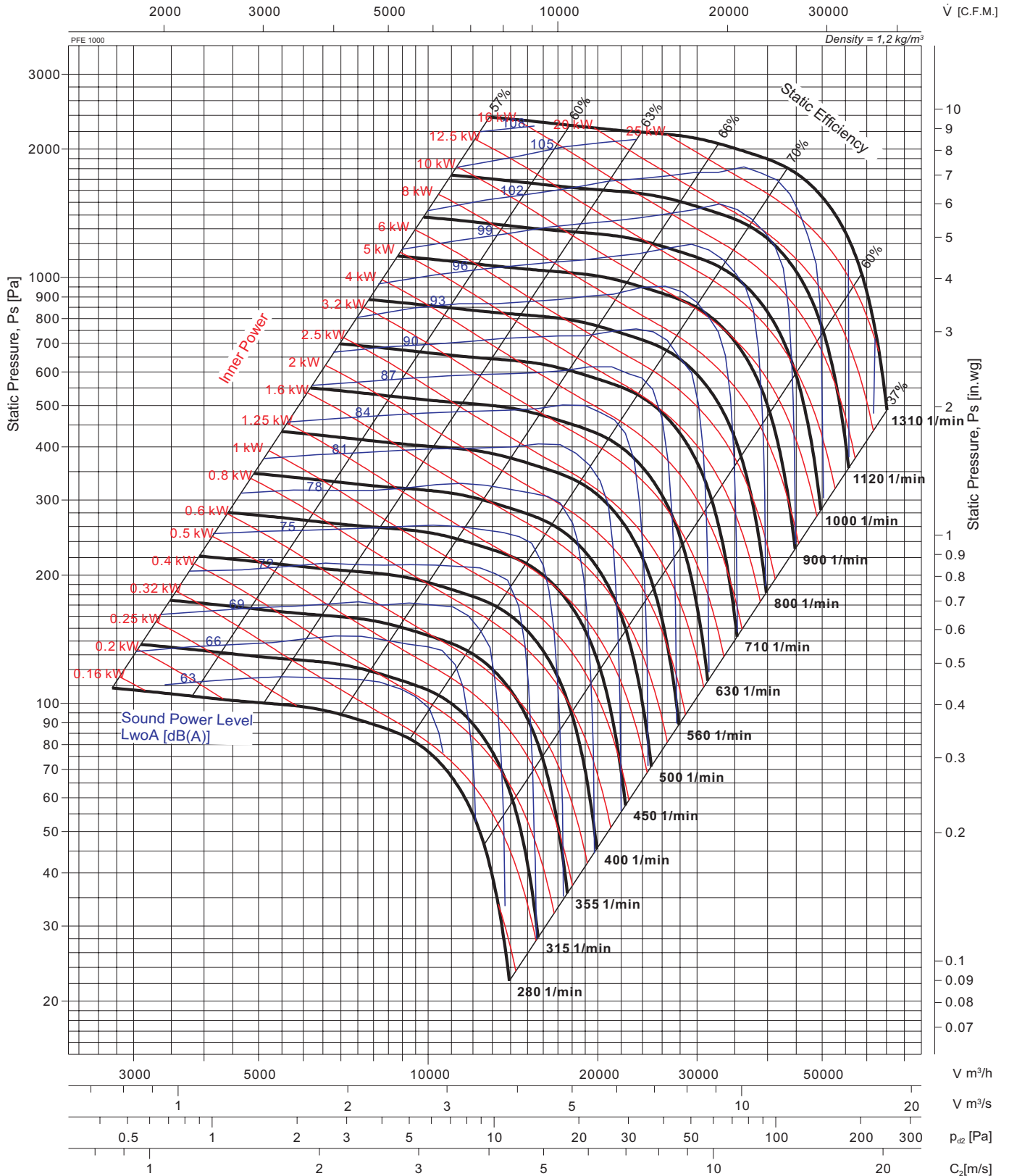
# Performance Curve

## PFE 1000



Fan test laboratory AMCA 210 Test Chamber. Performance certified is for installation type A-Free inlet, Free outlet. Performance ratings do not include the effects of appurtenances (accessories).

The A-weighted sound ratings shown have been calculated per AMCA International Standard 301. Values shown are for outlet LwoA sound power levels for installation Type A: free inlet, free outlet.



Typ	Art.Nr.	█ [kg]	Typ	Art.Nr.	█ [kg]	Wheel diameter	<b>D</b> = 1005 mm
PFE 1000		330				Number of blades	<b>z</b> = 6
						Outlet Area	<b>A</b> = 0.8904 m <sup>2</sup>
						Moment of inertia	<b>J</b> = 14.37 kg·m <sup>2</sup>
						Speed limit	<b>n<sub>max</sub></b> = 1310 1/min

Explanation of symbols see page II



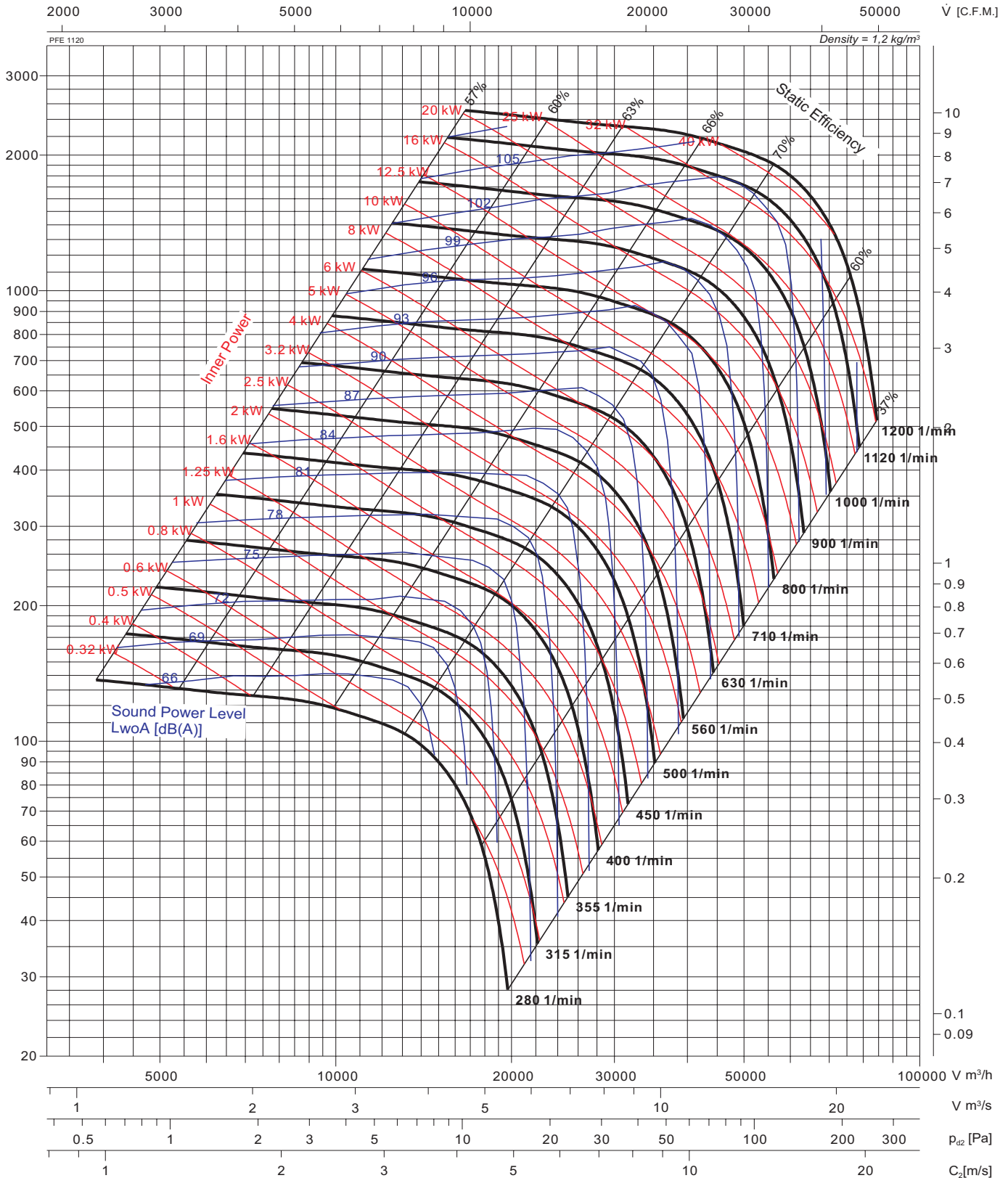
# Performance Curve

## PFE 1120



Fan test laboratory AMCA 210 Test Chamber. Performance certified is for installation type A-Free inlet, Free outlet. Performance ratings do not include the effects of appurtenances (accessories).

The A-weighted sound ratings shown have been calculated per AMCA International Standard 301. Values shown are for outlet LwoA sound power levels for installation Type A: free inlet, free outlet.



Typ	Art.Nr.	█ [kg]	Typ	Art.Nr.	█ [kg]	Wheel diameter	D =	1128	mm
PFE 1120		370				Number of blades	z =	6	
						Outlet Area	A =	1.1198	m <sup>2</sup>
						Moment of inertia	J =	23.52	kg·m <sup>2</sup>
						Speed limit	n <sub>max</sub> =	1200	1/min

Explanation of symbols see page II



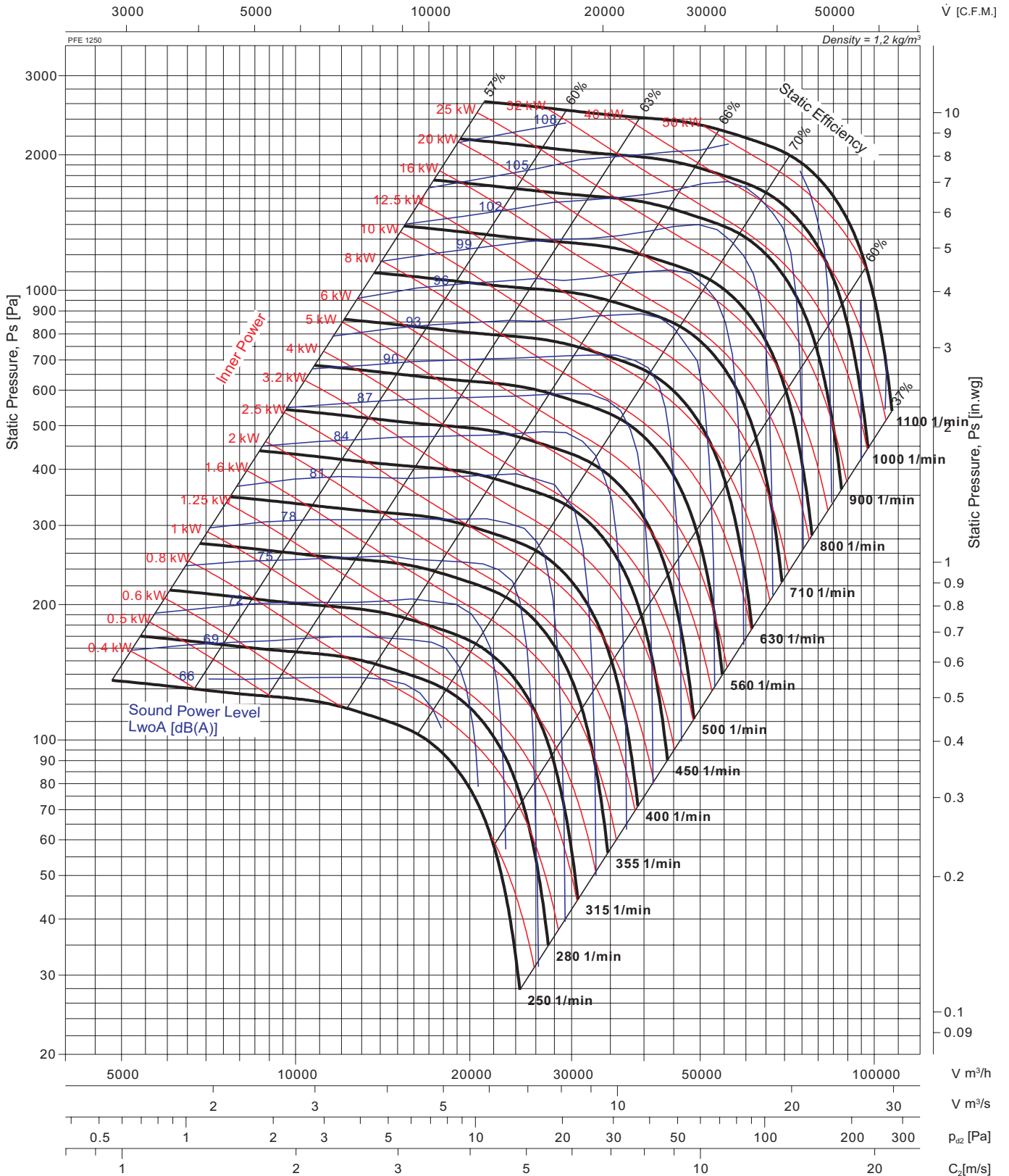
# Performance Curve

## PFE 1250



Fan test laboratory AMCA 210 Test Chamber. Performance certified is for installation type A-Free inlet, Free outlet. Performance ratings do not include the effects of appurtenances (accessories).

The A-weighted sound ratings shown have been calculated per AMCA International Standard 301. Values shown are for outlet LwoA sound power levels for installation Type A: free inlet, free outlet.



Typ	Art.Nr.	⚡ [kg]	Typ	Art.Nr.	⚡ [kg]	Wheel diameter <b>D</b> = 1258 mm	
PFE 1250		585				Number of blades <b>z</b> = 6	
						Outlet Area <b>A</b> = 1.3911 m²	
						Moment of inertia <b>J</b> = 37.11 kg·m²	
						Speed limit <b>n<sub>max</sub></b> = 1100 1/min	

Explanation of symbols see page 11



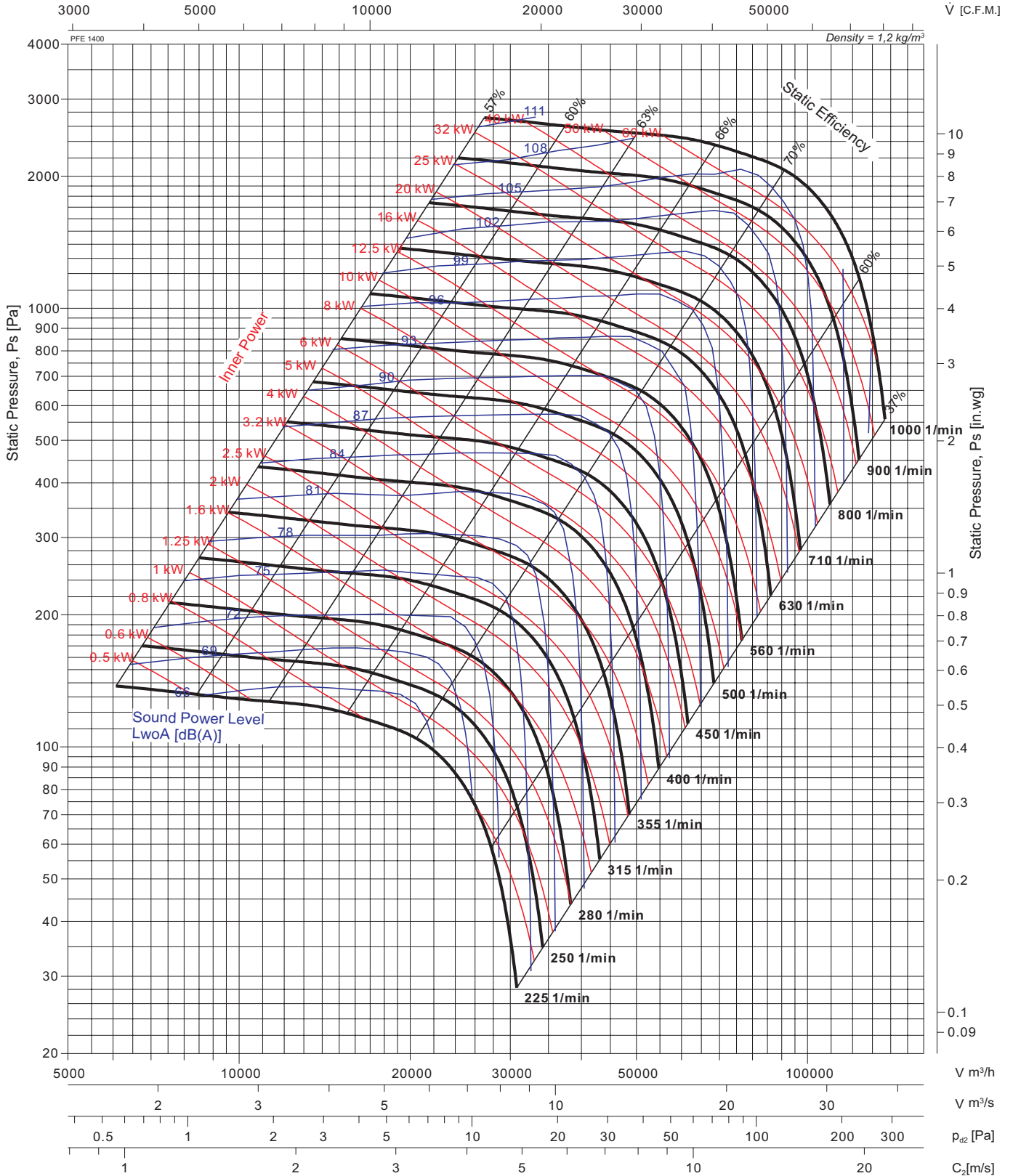
# Performance Curve

## PFE 1400



Fan test laboratory AMCA 210 Test Chamber. Performance certified is for installation type A-Free inlet, Free outlet. Performance ratings do not include the effects of appurtenances (accessories).

The A-weighted sound ratings shown have been calculated per AMCA International Standard 301. Values shown are for outlet LwoA sound power levels for installation Type A: free inlet, free outlet.



Typ	Art.Nr.	█ [kg]	Typ	Art.Nr.	█ [kg]	Wheel diameter	D = 1408 mm
PFE 1400		700				Number of blades	z = 6
						Outlet Area	A = 1.7472 m <sup>2</sup>
						Moment of inertia	J = 56.32 kg·m <sup>2</sup>
						Speed limit	n <sub>max</sub> = 1000 1/min

Explanation of symbols see page II

# Sales Network

## Deutschland

Wolter GmbH.  
Maschinen-und Apparatebau KG.  
DE-76316 Malsch  
T +49 (0) 72 04 / 92 01 0  
F +49 (0) 72 04 / 92 01 11  
info@wolter.eu

## Europe

### Denmark:

L.ØLAND VENTILATION A/S  
DK-2605 Brøndby  
T +45 (0) 70 / 20 19 11  
salg@airforce.dk

### Netherlands:

DE WIT Ventilatoren BV  
NL-3821 CG Amersfoort  
T +31 (0) 33 / 76 00 240  
info@dewitventilatoren.nl

### Sweden:

Nordisk Ventilator AB  
SE-142 50 Skogås  
T +46 (0) 8 / 72 70 250  
se@nordiskventilator.se

### Switzerland:

Anson AG Zürich  
CH-8055 Zürich  
T +41 (0) 44 / 46 11 111  
F +41 (0) 44 / 46 13 111  
info@anson.ch

OZ Tech SA  
CH-1122 Romanel-sur-Morges  
T +41 (0) 76 / 41 11 572  
info@oztech.ch

### United Kingdom:

Wolter (UK) Ltd.  
GB-Leicestershire LE65 1AL  
T +44 (0) 15 30 / 41 24 73  
info@wolteruk.com

## Middle East

### UAE, Saudi Arabia, Qatar, Lebanon:

Please contact Wolter head office

Wolter GmbH.  
Maschinen-und Apparatebau KG.  
DE-76316 Malsch  
T +49 (0) 72 04 / 92 01 0  
F +49 (0) 72 04 / 92 01 11  
info@wolter.eu

## Asia

### China:

Guangdong Wolter Chemco Ventilation Ltd.  
Boluo, Huizhou, Guangdong

Dongguan Wolter Chemco Ventilation Ltd.  
Shipai, Dongguan, Guangdong  
T +86 (0) 769 / 8655 7298  
F +86 (0) 769 / 8655 7278  
info@wolter.com.hk

Taizhou Wolter Ventilation Co. Ltd.  
Hengjie, Luqiao District,  
Taizhou, Zhejiang  
T +86 (0) 576 / 26 22 666 (26 52 888)  
F +86 (0) 576 / 26 56 830

### China - Hong Kong, Macau:

Wolter Asia Ltd  
Kowloon, Hong Kong  
T +852 (0) 2456 0198  
F +852 (0) 2456 0290  
info@wolter.com.hk

### China - Taiwan:

Waxlink International Co., Ltd.  
8F-2 No.218 Roosevelt Rd.,  
Sec.6, Taipei, Taiwan  
T +886 (0) 2 / 8932 1196  
F +886 (0) 2 / 8932 1197  
waxlink@mail.waxlinktw.com

## India:

Wolter Ventilators India Pvt. Ltd.  
867 D, Block-A, Sushant Lok, Phase-I,  
Gurgaon - 122009 (Haryana)  
T +91 (0) 124 2577797, 4261001-3  
sales@wolterindia.in

## Korea:

Kaceco-Wolter  
14-1, Dang-dong, Gunpo-shi,  
Gyeonggi-do  
T +(82) 0 31 / 4773 104  
F +(82) 0 31 / 4773 132  
wolter@kaceco.com  
info@kaceco.com

## Malaysia:

Vibrantech (M) Sdn Bhd.  
47200 Petaling Jaya Selangor  
T +603 (0) 7847 3500  
F +603 (0) 7847 3380  
sales@vibrantech-sb.com

## Singapore:

Wolter Pte. Ltd.  
SG-569738 Singapore  
T +65 (0) 63 / 52 95 48  
F +65 (0) 63 / 52 95 47  
info@wolterfans.com.sg

## Thailand:

Wolter Ventilation Co., Ltd.  
Thamai Kratumban Samutsakorn  
741 10 Thailand  
T +66 (0) 84 555 2936  
kongsakol@wolterfan.com

## Australia

The Sydney Fan Company.  
NSW 2147, Sydney, Australia  
T +61 (0) 2 / 9624 4000  
F +61 (0) 2 / 9624 4100  
sales@thesydneyfancompany.com

## Wolter GmbH Maschinen-und Apparatebau KG

Am Wasen 11  
DE-76316 Malsch / Germany  
T +49 (0) 72 04 / 92 01 0  
F +49 (0) 72 04 / 92 01 11  
www.wolter.eu  
info@wolter.eu





Reference: **R15**, V2017/July, Printed in July, 2017